



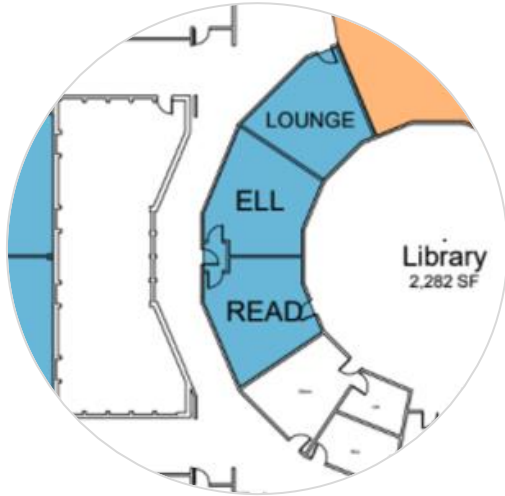
Building Our Future²⁰²⁵

Community • Growth • Student Success

KRISTINE SCHAEFER, ASSISTANT SUPERINTENDENT
March 3, 2022
sowashco.org/facilityplanning



Building Our Future



1 Facility Package



10-Year Plan



2025

Within 10 Years We Project



**8,000
NEW HOMES**



**3,500
NEW STUDENTS**



**15 SCHOOLS
OVER CAPACITY**

2025

Results

BOARD-APPROVED GOALS

Creation of a **10-year facility plan** that addresses:

- Enrollment increases from new construction or changing of boundaries
- Modernization of classroom space
- Needed renovations (such as bathrooms, kitchens, cafeterias, etc.)
- Curriculum and/or Instructional delivery methods
- Transportation facility needs
- Alternative high school space
- Operational facility needs
- Early learning programming
- Special education programming
- How buildings/schools will be repurposed

Results

BOARD-APPROVED GOALS

Creation of a **10-year facility plan** that addresses:

- Creation of a funding plan to address the costs of the 10-year facility plan which will include bonding, lease levies, and long-term facility maintenance revenue.
- Creation of learning spaces that support:
 - College and career ready students by providing flexible, adaptive spaces for learning
 - Environments that inspire social interactions
 - Diverse instructional styles and accommodate multiple forms of collaboration



10-Year Plan

LONG-RANGE FACILITY PACKAGE

Plan Summary

10-YEAR FACILITY PACKAGE

- Efficient use of current buildings
- Closure of an elementary building for transformation into an early learning site
- Build a centrally located elementary school
- Accommodate early learning, special education and community education programming
- Minimal changes to attendance boundaries
- Least amount of disruption to families
- Adhere to a 10-year facility plan as approved by the school board
- Acknowledge the tax impact on property owners
- Lay the groundwork for future growth (beyond 10 years)



The background of the slide is white and decorated with numerous circles in three colors: bright yellow, light beige, and dark brown. These circles are scattered across the entire page, with some appearing as single dots and others as overlapping pairs or groups. The text "Key Components" is centered in the middle of the slide in a dark blue, bold, sans-serif font.

Key Components



2025 Building our Future

Crestview Elementary – Projects



Construction of a new 1000 seat school in a more central district location

Keep the current school community together

Expand the current attendance boundary

Transform current **Crestview Elementary** building for the **South Washington Alternative High School** with space for adult basic education

The **Park High School** campus will be extended into the current **Crestview Elementary** campus.

BOARD-APPROVED GOALS ADDRESSED



- Modernization of classroom space
- Needed renovations (such as bathrooms, kitchens, cafeterias, etc.)
- Curriculum and/or Instructional delivery methods
- Alternative high school space
- Early learning programming
- Special education programming
- How buildings/schools will be repurposed
- Creation of learning spaces that support:
 - College and career ready students by providing flexible, adaptive spaces for learning
 - Environments that inspire social interactions
 - Diverse instructional styles and accommodate multiple forms of collaboration

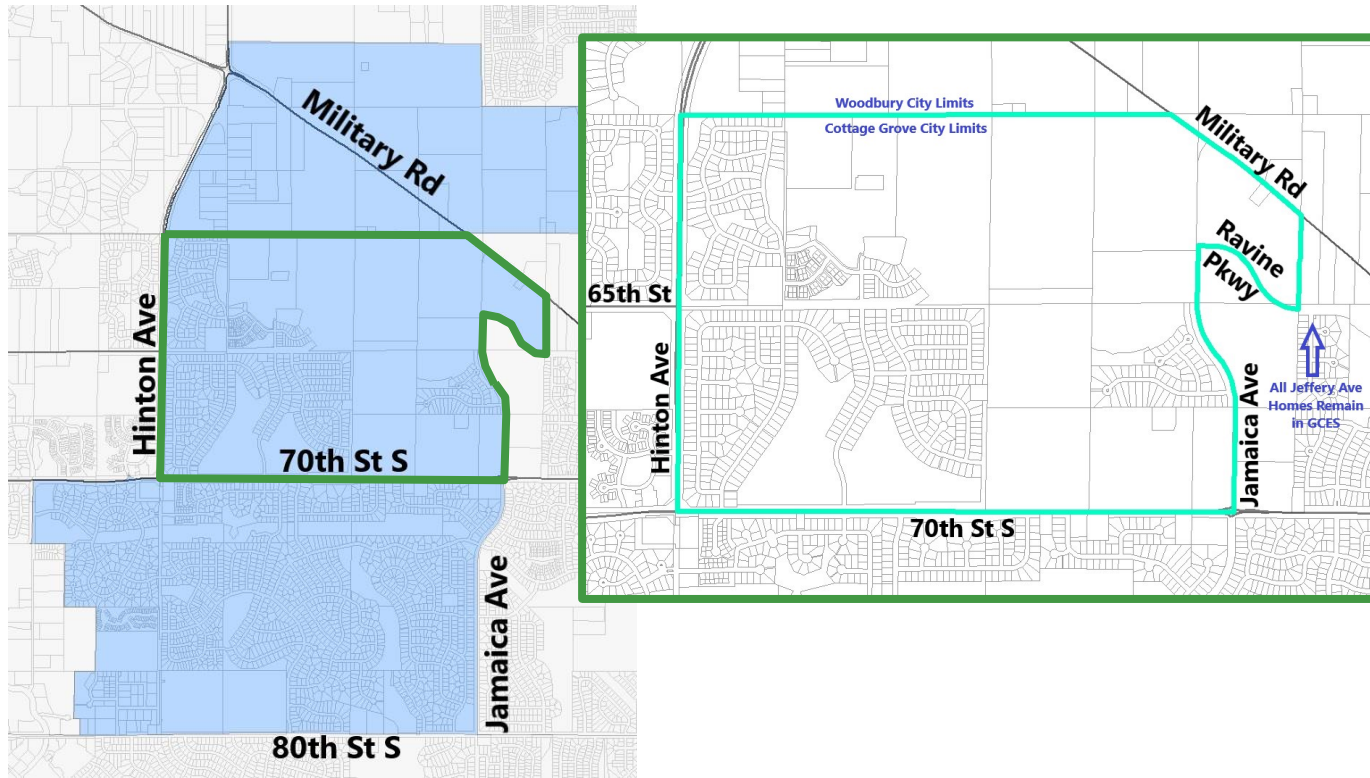


2025

Building our Future

Crestview Elementary – Attendance Boundaries

so
wash
co
SCHOOLS



Attendance boundary is removed from Grey Cloud Elementary and is added to Crestview Elementary

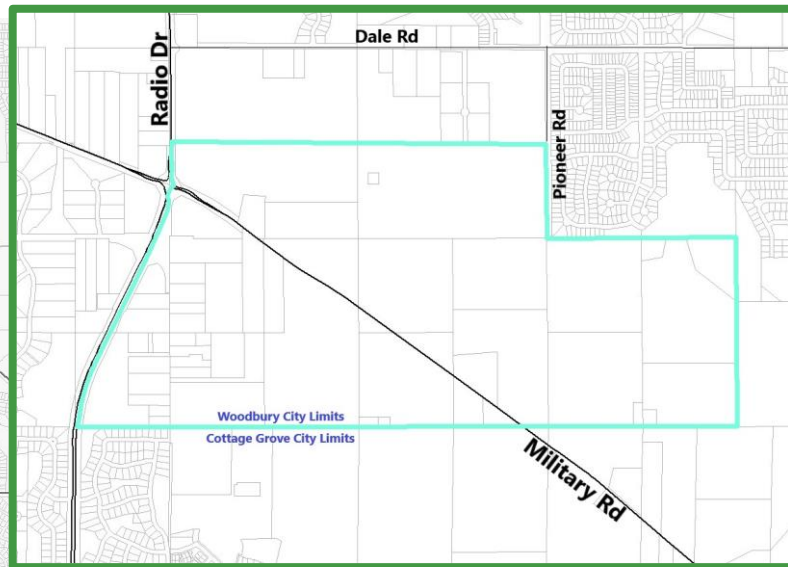
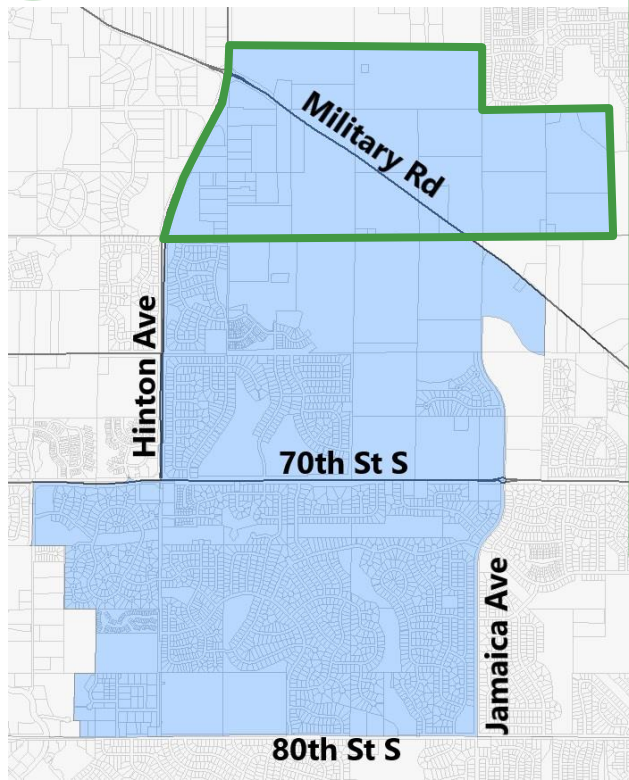


2025

Building our Future

Crestview Elementary – Attendance Boundaries

so
Wash
CO
SCHOOLS



Attendance boundary is removed from Bailey Elementary and is added to Crestview Elementary



Building our Future²⁰²⁵

Newport Elementary – Projects



Closure of **Newport Elementary** no earlier than 2025

Attendance boundaries modified for attendance at nearby Woodbury Elementary, Cottage Grove Elementary and Bailey Elementary

Transform current **Newport Elementary** building for a new **SoWashCo Schools Early Childhood Learning Center**

BOARD-APPROVED GOALS ADDRESSED

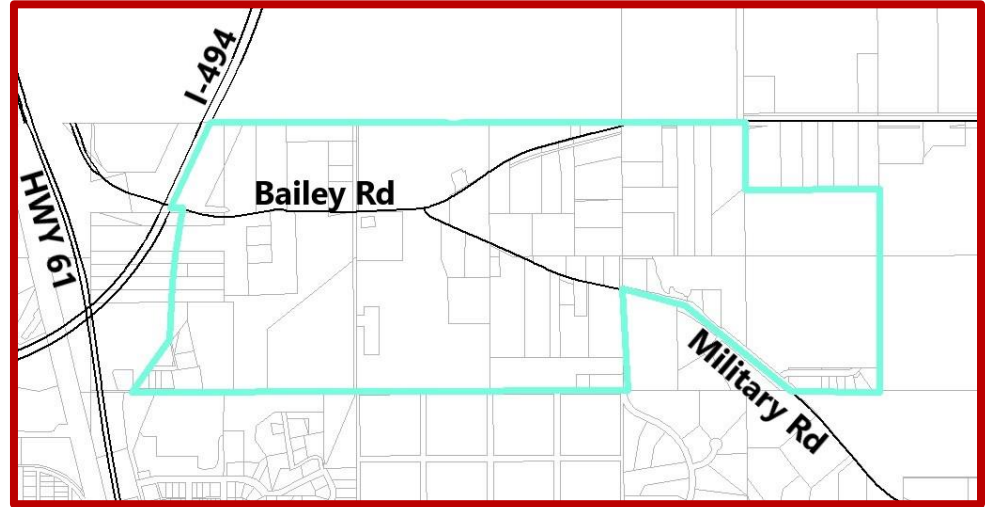


- Early learning programming
- How buildings/schools will be repurposed
- Creation of learning spaces that support:
 - College and career ready students by providing flexible, adaptive spaces for learning
 - Environments that inspire social interactions
 - Diverse instructional styles and accommodate multiple forms of collaboration



2025 Building our Future

Newport Elementary – Attendance Boundaries



Attendance boundary is removed from Newport Elementary and moves to Bailey Elementary

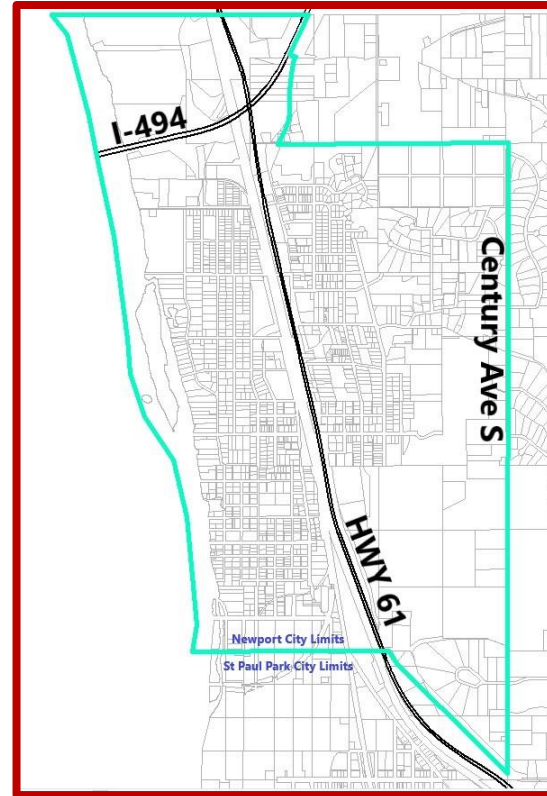
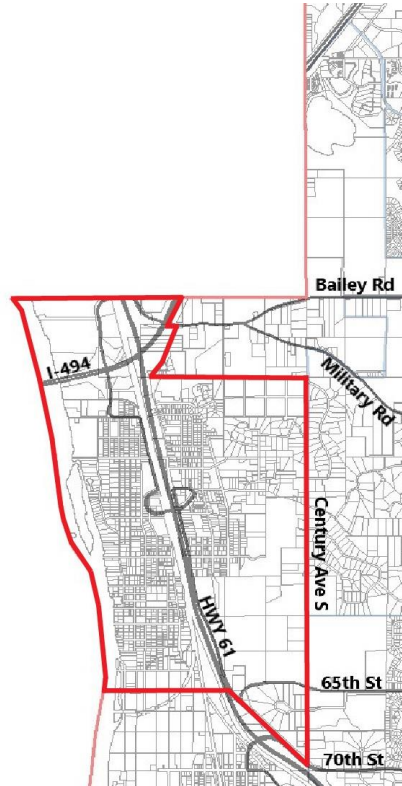


2025

Building our Future

Newport Elementary – Attendance Boundaries

so
Wash
CO
SCHOOLS



Attendance boundary is removed from Newport Elementary and moves to Cottage Grove Elementary

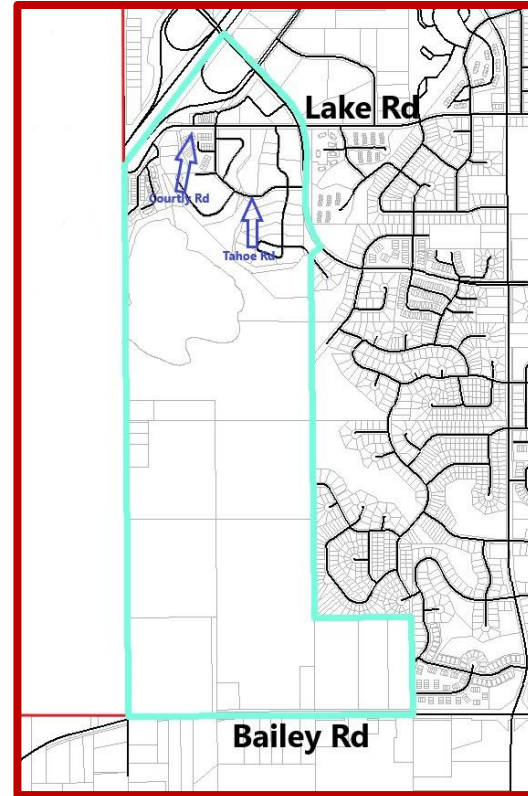


2025

Building our Future

Newport Elementary – Attendance Boundaries

so
wash
co
SCHOOLS



Attendance boundary is removed from Newport Elementary and moves to Woodbury Elementary

The background of the slide is white and decorated with numerous circles in three colors: bright yellow, light beige, and dark brown. These circles are scattered across the entire page, with some appearing as single dots and others as overlapping pairs or small groups. The text "Elementary Schools" is centered in the middle of the slide in a dark blue, bold, sans-serif font.

Elementary Schools



Building our Future²⁰²⁵

Armstrong Elementary – Projects



Construction of a new kitchen

Renovation to create shared learning space

Construction of new bathrooms in early learning and special education rooms

BOARD-APPROVED GOALS ADDRESSED



- Needed renovations (such as bathrooms, kitchens, cafeterias, etc.)
- Curriculum and/or Instructional delivery methods
- Early learning programming
- Special education programming
- Creation of learning spaces that support:
 - College and career ready students by providing flexible, adaptive spaces for learning
 - Environments that inspire social interactions
 - Diverse instructional styles and accommodate multiple forms of collaboration



Building our Future²⁰²⁵

Bailey Elementary – Projects



Construction of a new classroom addition

Construction of a new larger cafeteria and kitchen

BOARD-APPROVED GOALS ADDRESSED



- Modernization of classroom space
- Needed renovations (such as bathrooms, kitchens, cafeterias, etc.)
- Creation of learning spaces that support:
 - College and career ready students by providing flexible, adaptive spaces for learning
 - Environments that inspire social interactions
 - Diverse instructional styles and accommodate multiple forms of collaboration

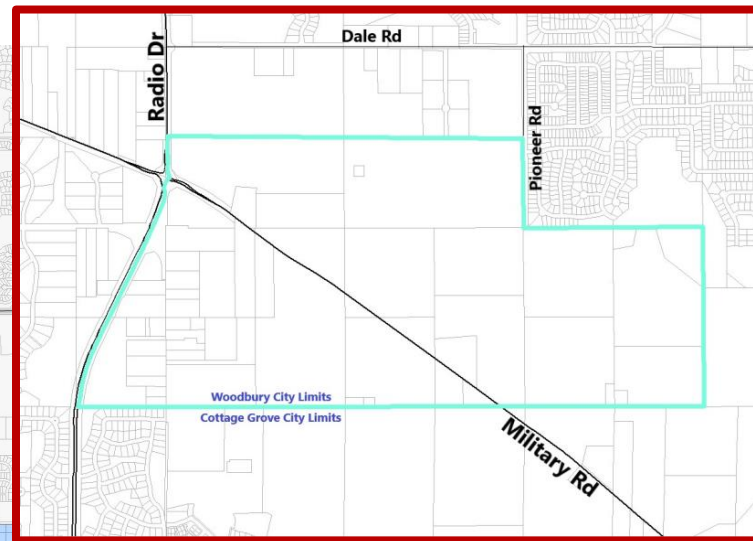
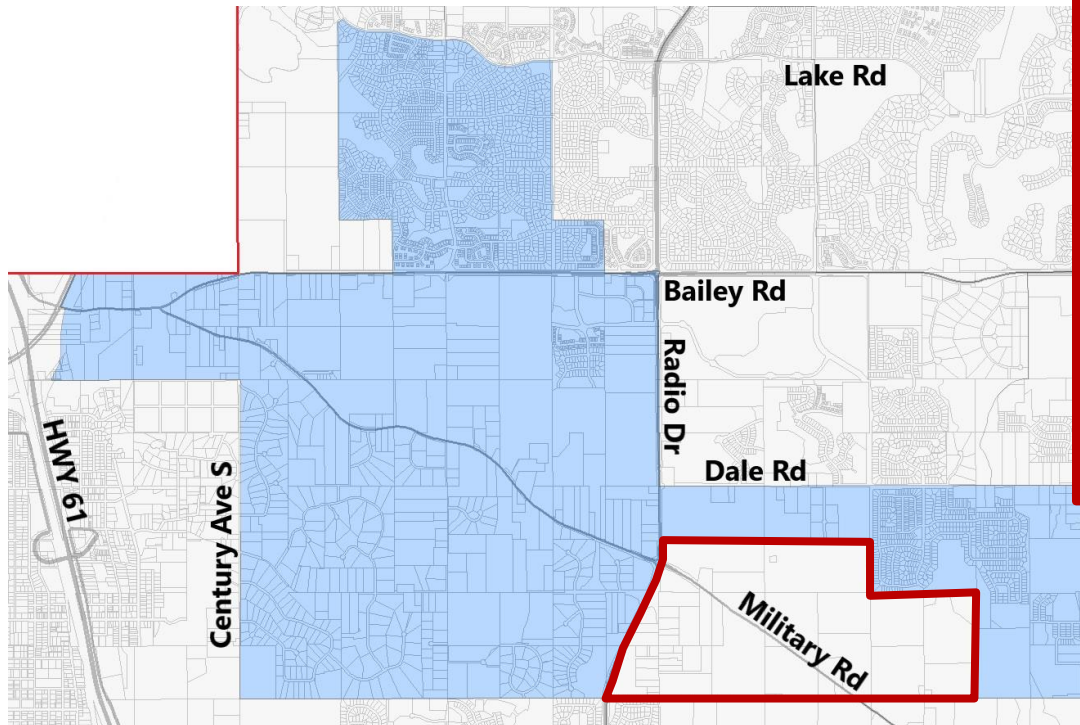


2025

Building our Future

Bailey Elementary – Attendance Boundaries

so
wash
co
SCHOOLS



Attendance boundary is removed from Bailey Elementary and moves to Crestview Elementary

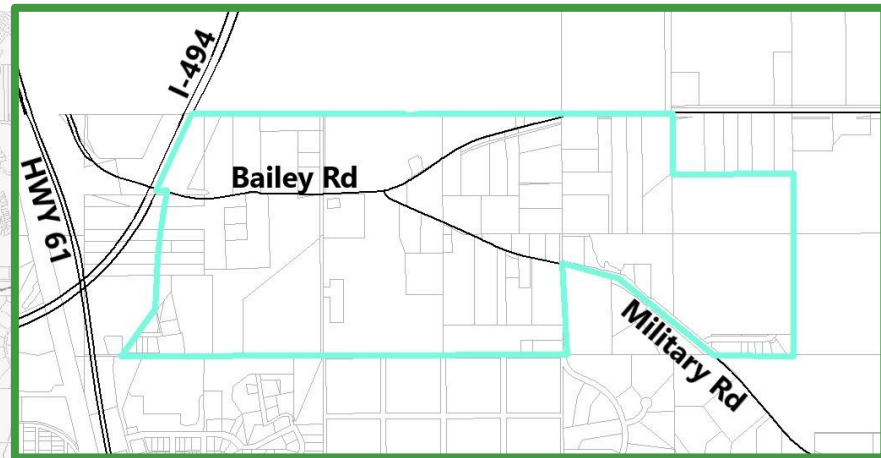
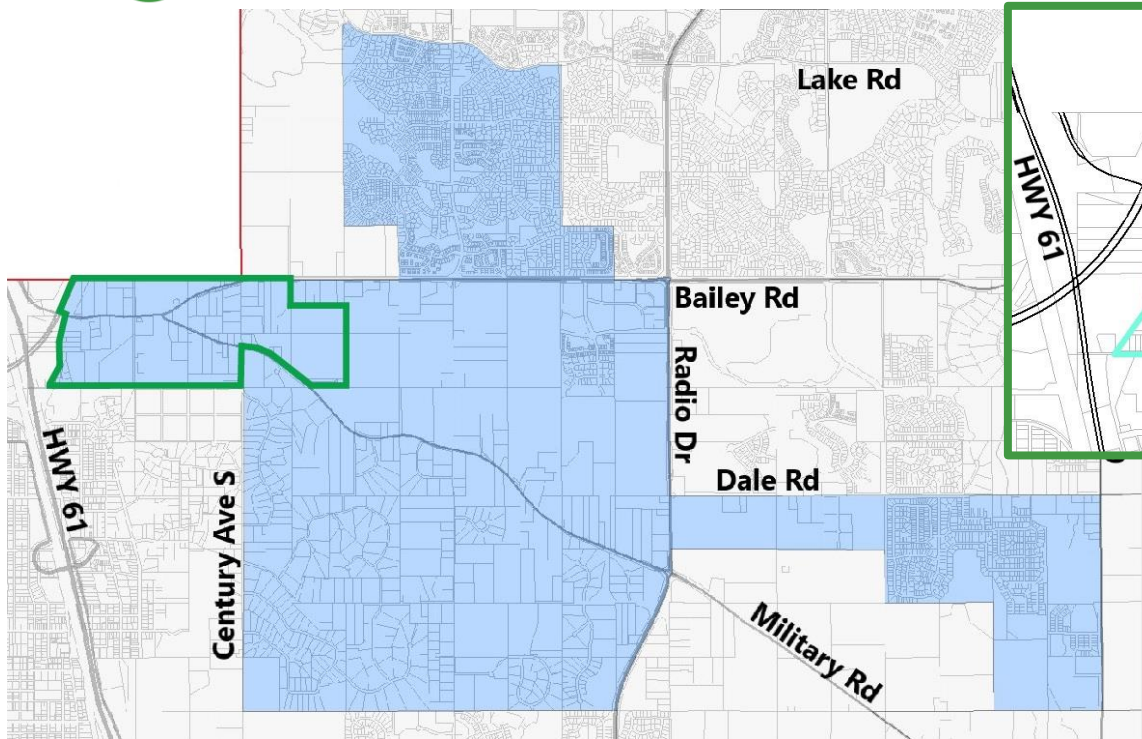


2025

Building our Future

Bailey Elementary – Attendance Boundaries

so
wash
co
SCHOOLS



Attendance boundary is removed from Newport Elementary and is added to Bailey Elementary



Building our Future²⁰²⁵

Cottage Grove Elementary – Projects



Construction of a new classroom addition

BOARD-APPROVED GOALS ADDRESSED



- Modernization of classroom space
- Creation of learning spaces that support:
 - College and career ready students by providing flexible, adaptive spaces for learning
 - Environments that inspire social interactions
 - Diverse instructional styles and accommodate multiple forms of collaboration

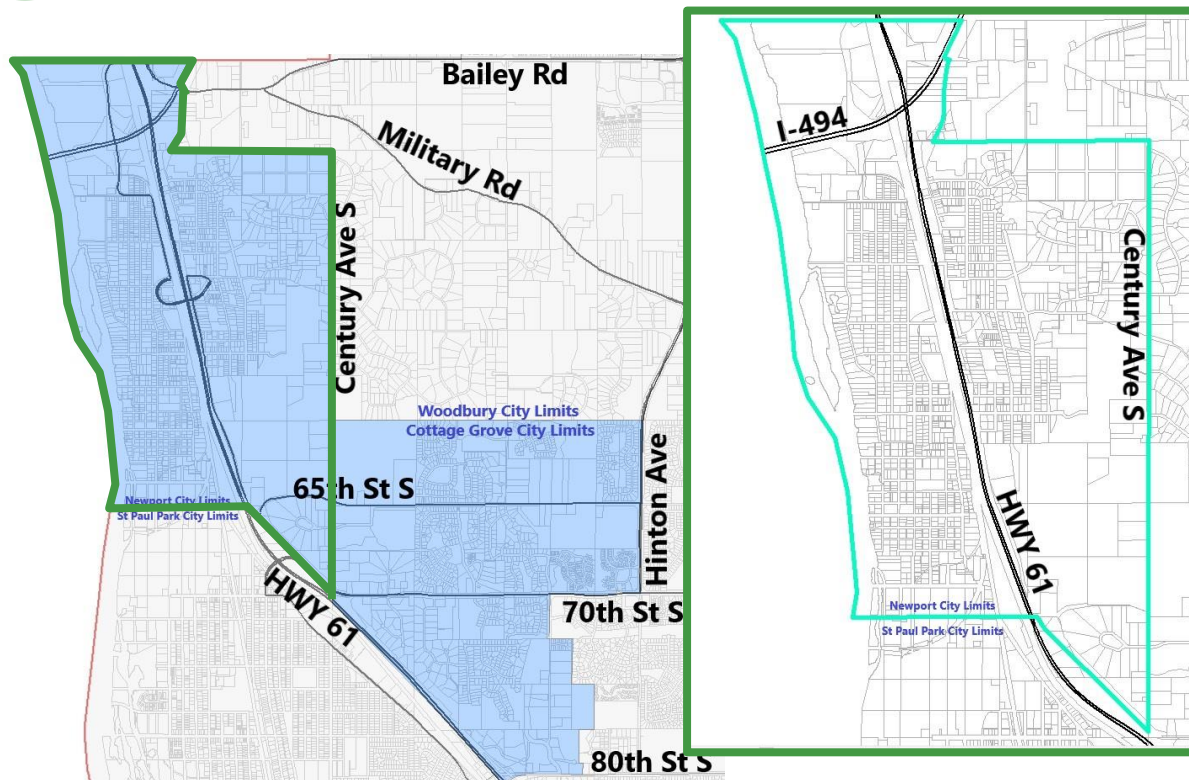


2025

Building our Future

Cottage Grove Elementary – Attendance Boundaries

so
wash
co
SCHOOLS



Attendance boundary is removed from Newport Elementary and is added to Cottage Grove Elementary



Building our Future²⁰²⁵

Grey Cloud Elementary – Projects



Construction of new classroom addition

Construction of new special education classrooms

Construction of a new larger cafeteria and kitchen

BOARD-APPROVED GOALS ADDRESSED

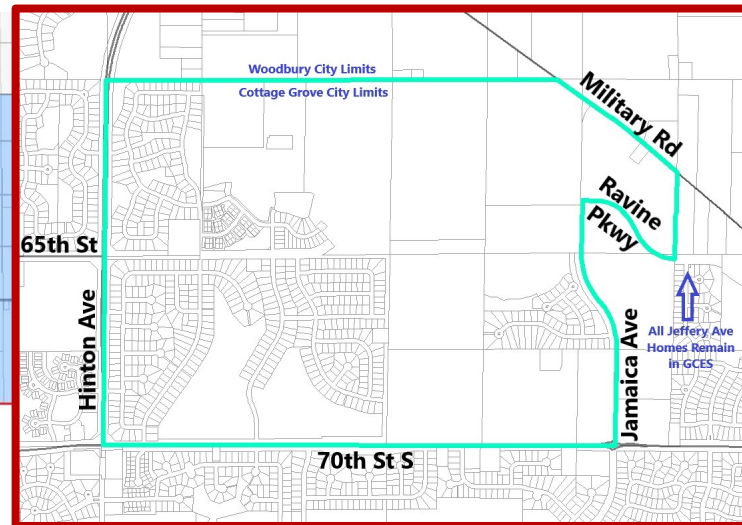
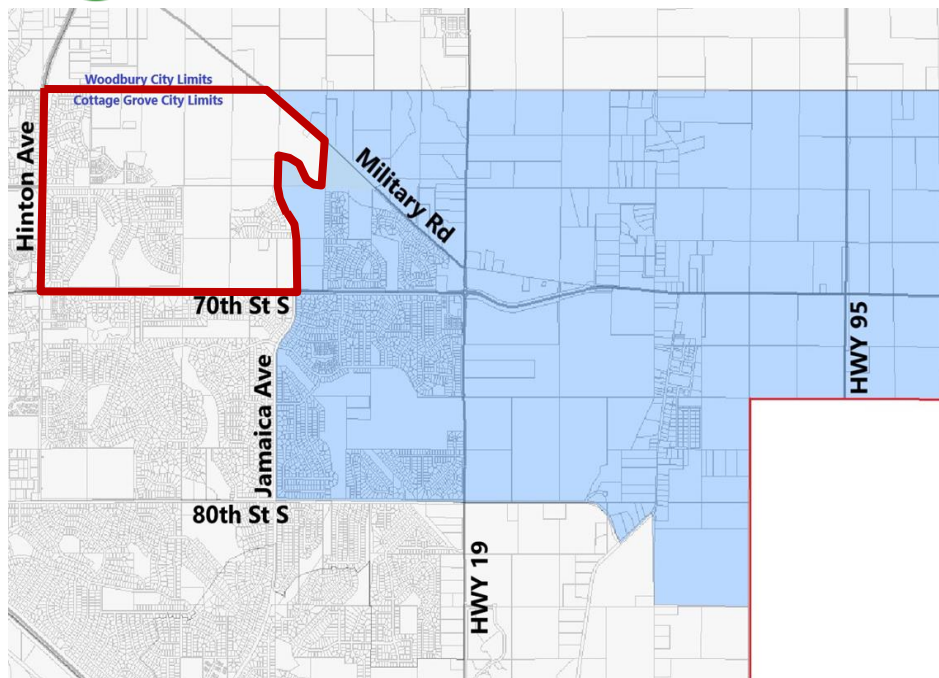


- Modernization of classroom space
- Needed renovations (such as bathrooms, kitchens, cafeterias, etc.)
- Curriculum and/or Instructional delivery methods
- Special education programming
- Creation of learning spaces that support:
 - College and career ready students by providing flexible, adaptive spaces for learning
 - Environments that inspire social interactions
 - Diverse instructional styles and accommodate multiple forms of collaboration



2025 Building our Future

Grey Cloud Elementary – Attendance Boundaries



Attendance boundary is removed from Grey Cloud Elementary and moves to Crestview Elementary



Building our Future²⁰²⁵

Hillside Elementary – Projects



Construction of new bathrooms

Renovation of early learning and special education spaces

Renovation to create shared learning space

Renovation of kitchen

BOARD-APPROVED GOALS ADDRESSED



- Modernization of classroom space
- Needed renovations (such as bathrooms, kitchens, cafeterias, etc.)
- Curriculum and/or Instructional delivery methods
- Early learning programming
- Special education programming
- Creation of learning spaces that support:
 - College and career ready students by providing flexible, adaptive spaces for learning
 - Environments that inspire social interactions
 - Diverse instructional styles and accommodate multiple forms of collaboration



Building our Future²⁰²⁵

Liberty Ridge Elementary – Projects



Construction of a new classroom addition

BOARD-APPROVED GOALS ADDRESSED



- Modernization of classroom space
- Creation of learning spaces that support:
 - College and career ready students by providing flexible, adaptive spaces for learning
 - Environments that inspire social interactions
 - Diverse instructional styles and accommodate multiple forms of collaboration



2025 Building our Future

Middleton Elementary – Projects



Renovation of early learning and special education spaces

BOARD-APPROVED GOALS ADDRESSED



- Curriculum and/or Instructional delivery methods
- Early learning programming
- Special education programming
- Creation of learning spaces that support:
 - College and career ready students by providing flexible, adaptive spaces for learning
 - Environments that inspire social interactions
 - Diverse instructional styles and accommodate multiple forms of collaboration

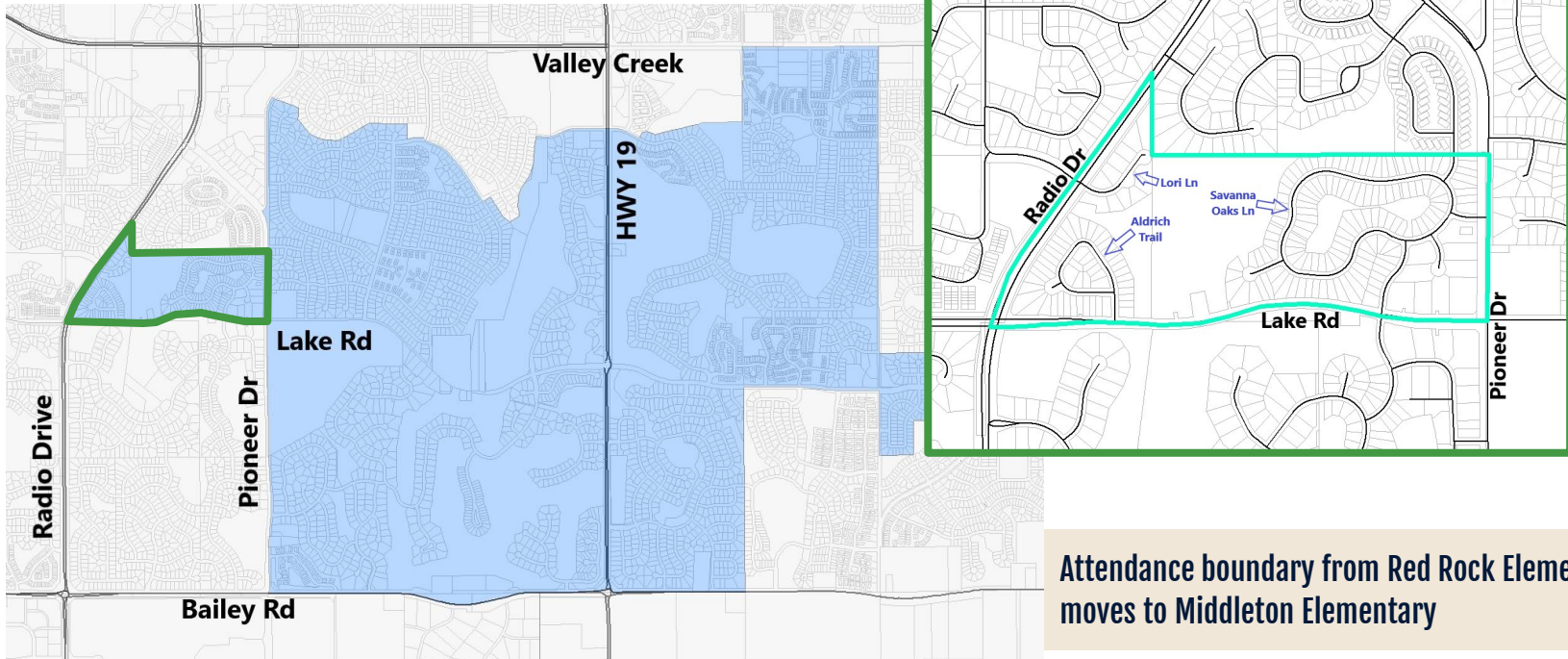


2025

Building our Future

Middleton Elementary – Attendance Boundaries

so
wash
co
SCHOOLS



Attendance boundary from Red Rock Elementary moves to Middleton Elementary



2025

Building our Future

Nuevas Fronteras Spanish Immersion – Projects



General maintenance projects



Building our Future²⁰²⁵

Pine Hill Elementary – Projects



Replace current building with a new **Pine Hill Elementary** (850 seats) on site

BOARD-APPROVED GOALS ADDRESSED



- Modernization of classroom space
- Needed renovations (such as bathrooms, kitchens, cafeterias, etc.)
- Curriculum and/or Instructional delivery methods
- Early learning programming
- Special education programming
- Creation of learning spaces that support:
 - College and career ready students by providing flexible, adaptive spaces for learning
 - Environments that inspire social interactions
 - Diverse instructional styles and accommodate multiple forms of collaboration



Building our Future²⁰²⁵

Pullman Elementary – Projects



Construction of new bathrooms

Renovation of special education spaces

Renovation to create shared learning space

Renovation of kitchen

BOARD-APPROVED GOALS ADDRESSED



- Modernization of classroom space
- Needed renovations (such as bathrooms, kitchens, cafeterias, etc.)
- Curriculum and/or Instructional delivery methods
- Early learning programming
- Special education programming
- Creation of learning spaces that support:
 - College and career ready students by providing flexible, adaptive spaces for learning
 - Environments that inspire social interactions
 - Diverse instructional styles and accommodate multiple forms of collaboration



Building our Future²⁰²⁵

Red Rock Elementary – Projects



Renovation of kindergarten and special education spaces

BOARD-APPROVED GOALS ADDRESSED



- Modernization of classroom space
- Special education programming
- Creation of learning spaces that support:
 - College and career ready students by providing flexible, adaptive spaces for learning
 - Environments that inspire social interactions
 - Diverse instructional styles and accommodate multiple forms of collaboration

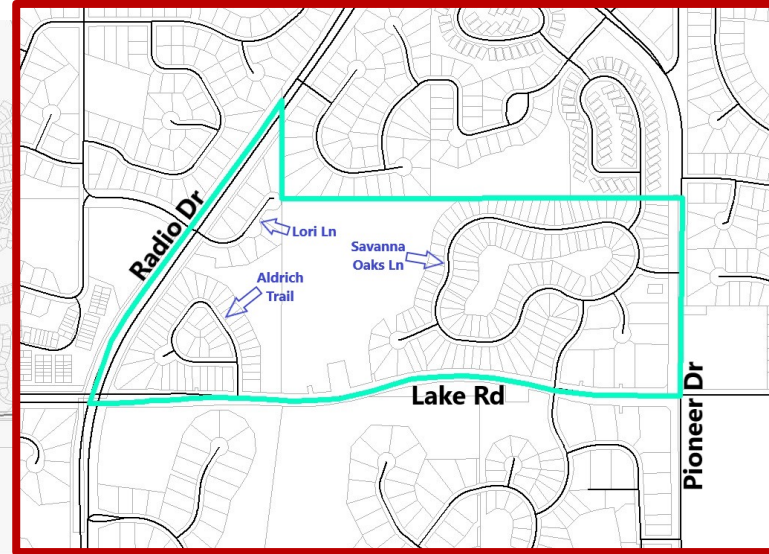
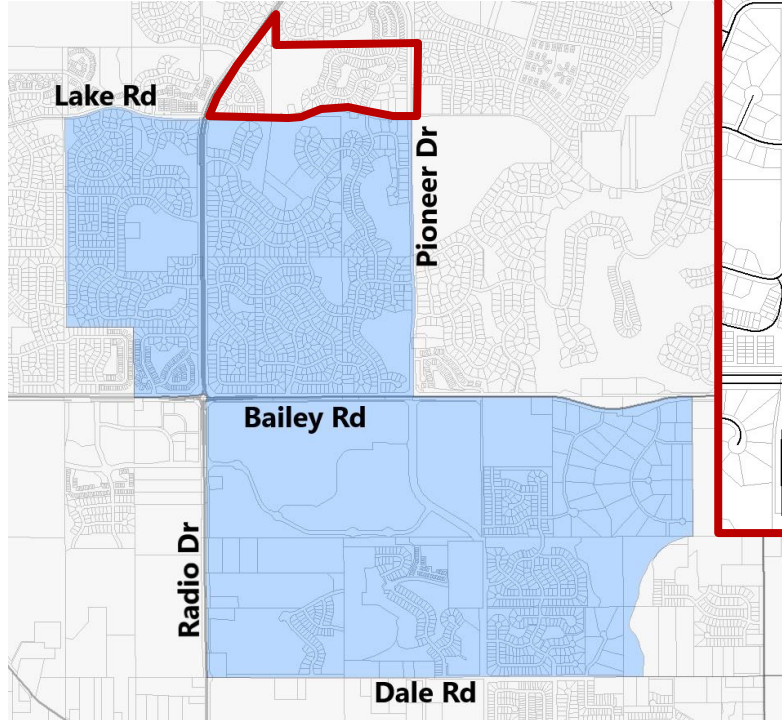


2025

Building our Future

Red Rock Elementary – Attendance Boundaries

so
Wash
CO
SCHOOLS



Attendance boundary is removed from Red Rock Elementary and moves to Middleton Elementary



2025 Building our Future

Royal Oaks Elementary – Projects



Construction of additional new bathrooms

Renovation of special education spaces

Renovation to create shared learning space

Renovation of kitchen

BOARD-APPROVED GOALS ADDRESSED



- Modernization of classroom space
- Needed renovations (such as bathrooms, kitchens, cafeterias, etc.)
- Curriculum and/or Instructional delivery methods
- Early learning programming
- Special education programming
- Creation of learning spaces that support:
 - College and career ready students by providing flexible, adaptive spaces for learning
 - Environments that inspire social interactions
 - Diverse instructional styles and accommodate multiple forms of collaboration



Building our Future²⁰²⁵

Valley Crossing Elementary – Projects



General maintenance projects



Building our Future²⁰²⁵

Woodbury Elementary – Projects



Renovation to create shared learning space

Renovation of early learning and special education spaces

Renovation of kitchen

BOARD-APPROVED GOALS ADDRESSED



- Modernization of classroom space
- Needed renovations (such as bathrooms, kitchens, cafeterias, etc.)
- Curriculum and/or Instructional delivery methods
- Early learning programming
- Special education programming
- Creation of learning spaces that support:
 - College and career ready students by providing flexible, adaptive spaces for learning
 - Environments that inspire social interactions
 - Diverse instructional styles and accommodate multiple forms of collaboration

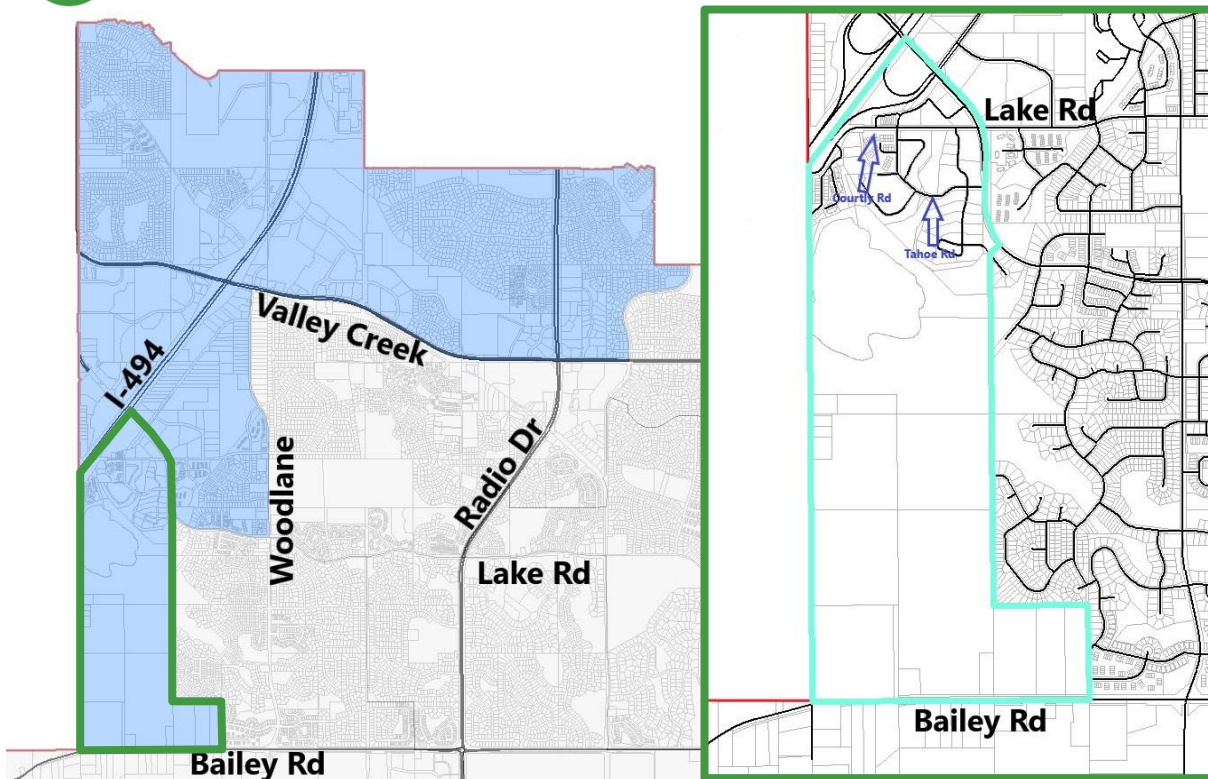


2025

Building our Future

Woodbury Elementary – Attendance Boundaries

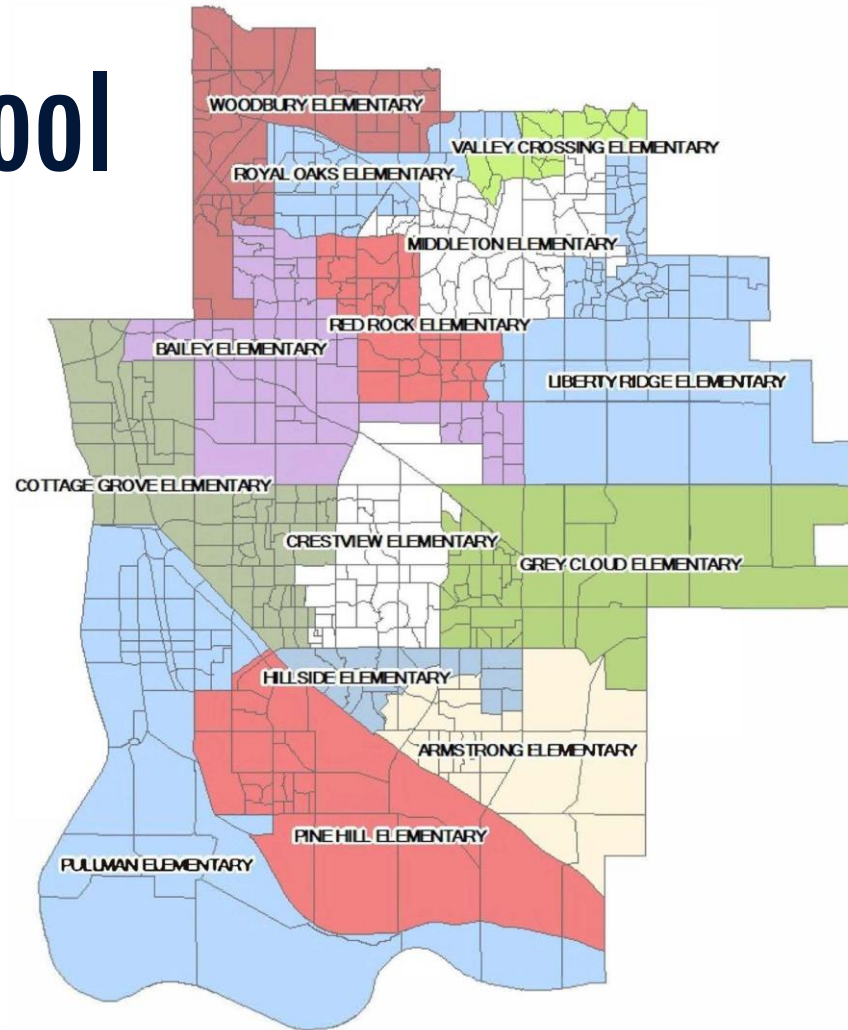
so
Wash
CO
SCHOOLS



Attendance boundary from Newport Elementary School moves to Woodbury Elementary School

Elementary School

Attendance Boundaries



The background of the slide is white and decorated with numerous circles in three colors: bright yellow, light beige, and dark brown. These circles are scattered across the entire page, with some appearing as single dots and others as overlapping pairs or small groups. The text "Early Learning" is centered in the middle of the slide in a dark blue, sans-serif font.

Early Learning



Building our Future²⁰²⁵

Early Learning Centers – Projects



Existing **Liberty Ridge Site II** continues as an early learning center

Newport Elementary School building converted to an early learning center

BOARD-APPROVED GOALS ADDRESSED



- Modernization of classroom space
- Early learning programming
- How buildings/schools will be repurposed
- Creation of learning spaces that support:
 - College and career ready students by providing flexible, adaptive spaces for learning
 - Environments that inspire social interactions
 - Diverse instructional styles and accommodate multiple forms of collaboration

Discussion

The background of the slide is white and decorated with numerous circles of three colors: dark blue, teal, and beige. Some circles are solid, while others are overlapping, creating a pattern of different shades and sizes. The circles are scattered across the entire page, with a higher density around the central text.

Middle Schools



2025 Building our Future

Cottage Grove Middle School – Projects



Construction of a new classroom addition

Construction of a new secure entry

Renovation of kitchen serving line

Student capacity approximately 1,400

BOARD-APPROVED GOALS ADDRESSED



- Modernization of classroom space
- Needed renovations (such as bathrooms, kitchens, cafeterias, etc.)
- Creation of learning spaces that support:
 - College and career ready students by providing flexible, adaptive spaces for learning
 - Environments that inspire social interactions
 - Diverse instructional styles and accommodate multiple forms of collaboration



2025 Building our Future

Lake Middle School – Projects



Construction of a new classroom addition

Construction of a new secure entry

Renovation of kitchen serving line

Student capacity approximately 1,400

BOARD-APPROVED GOALS ADDRESSED



- Modernization of classroom space
- Needed renovations (such as bathrooms, kitchens, cafeterias, etc.)
- Creation of learning spaces that support:
 - College and career ready students by providing flexible, adaptive spaces for learning
 - Environments that inspire social interactions
 - Diverse instructional styles and accommodate multiple forms of collaboration



Building our Future²⁰²⁵

Oltman Middle School – Projects



Construction of a new classroom addition (originally built for expansion)

Expansion of cafeteria (originally built for expansion)

Student capacity approximately 1,400

BOARD-APPROVED GOALS ADDRESSED



- Modernization of classroom space
- Needed renovations (such as bathrooms, kitchens, cafeterias, etc.)
- Creation of learning spaces that support:
 - College and career ready students by providing flexible, adaptive spaces for learning
 - Environments that inspire social interactions
 - Diverse instructional styles and accommodate multiple forms of collaboration

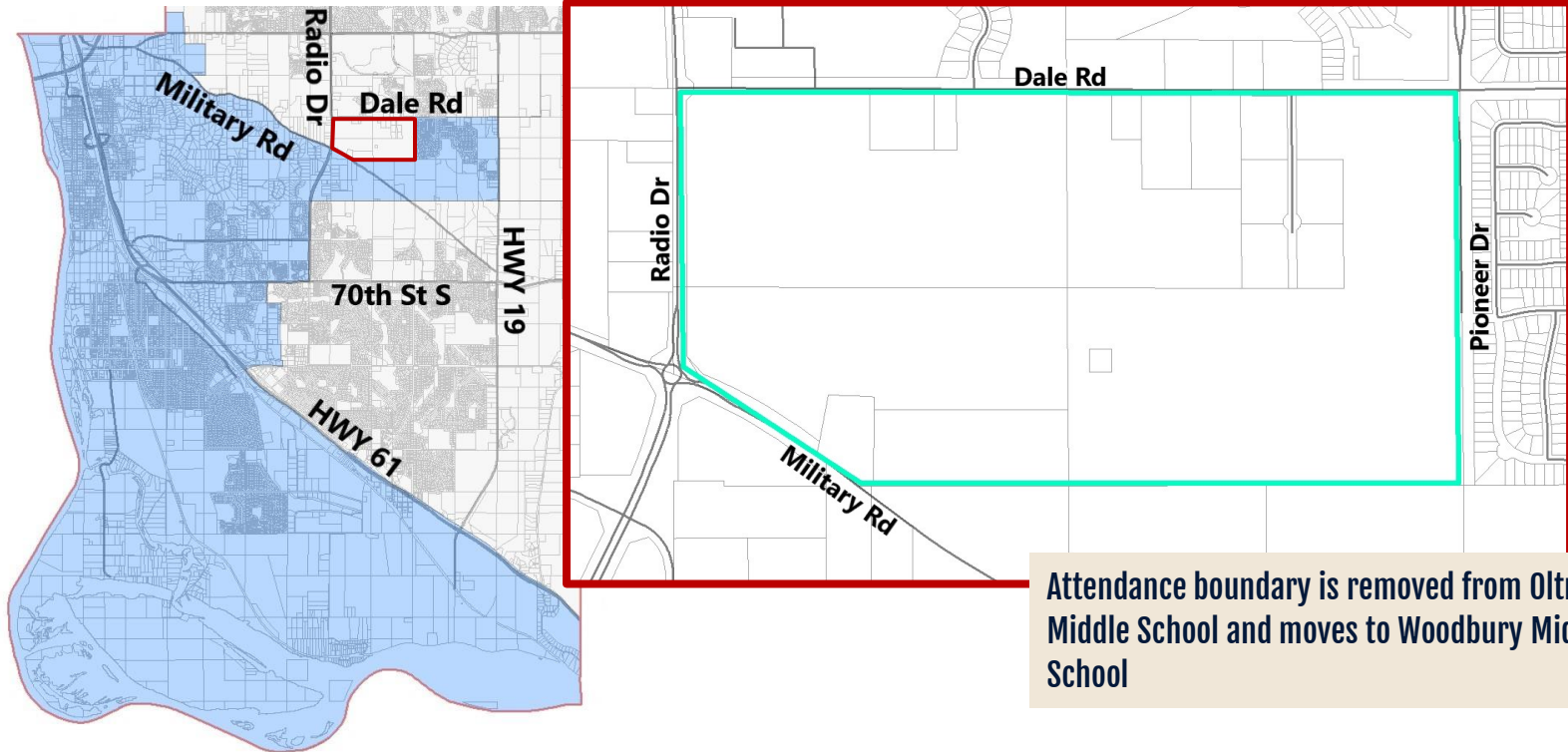


2025

Building our Future

Oltman Middle School – Attendance Boundaries

so
Wash
CO
SCHOOLS



Attendance boundary is removed from Oltman Middle School and moves to Woodbury Middle School



2025 Building our Future

Woodbury Middle School – Projects



Construction of a new music room

Construction of a new secure entry

Renovation of existing space to expand capacity, including new art and Science, Technology, Engineering and Math (STEM) classrooms

Expansion of kitchen serving area

Student capacity approximately 1,400

BOARD-APPROVED GOALS ADDRESSED



- Modernization of classroom space
- Needed renovations (such as bathrooms, kitchens, cafeterias, etc.)
- Curriculum and/or Instructional delivery methods
- Creation of learning spaces that support:
 - College and career ready students by providing flexible, adaptive spaces for learning
 - Environments that inspire social interactions
 - Diverse instructional styles and accommodate multiple forms of collaboration

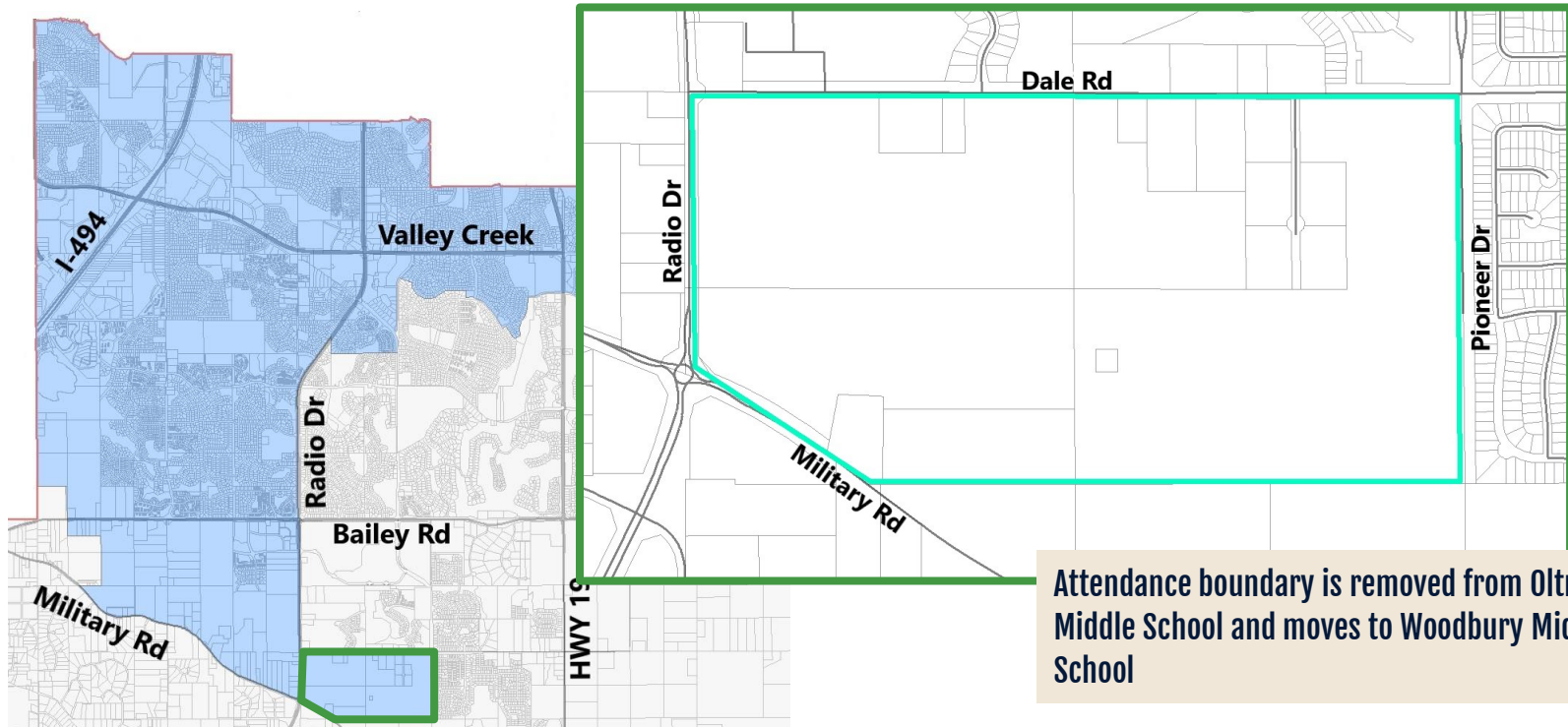


2025

Building our Future

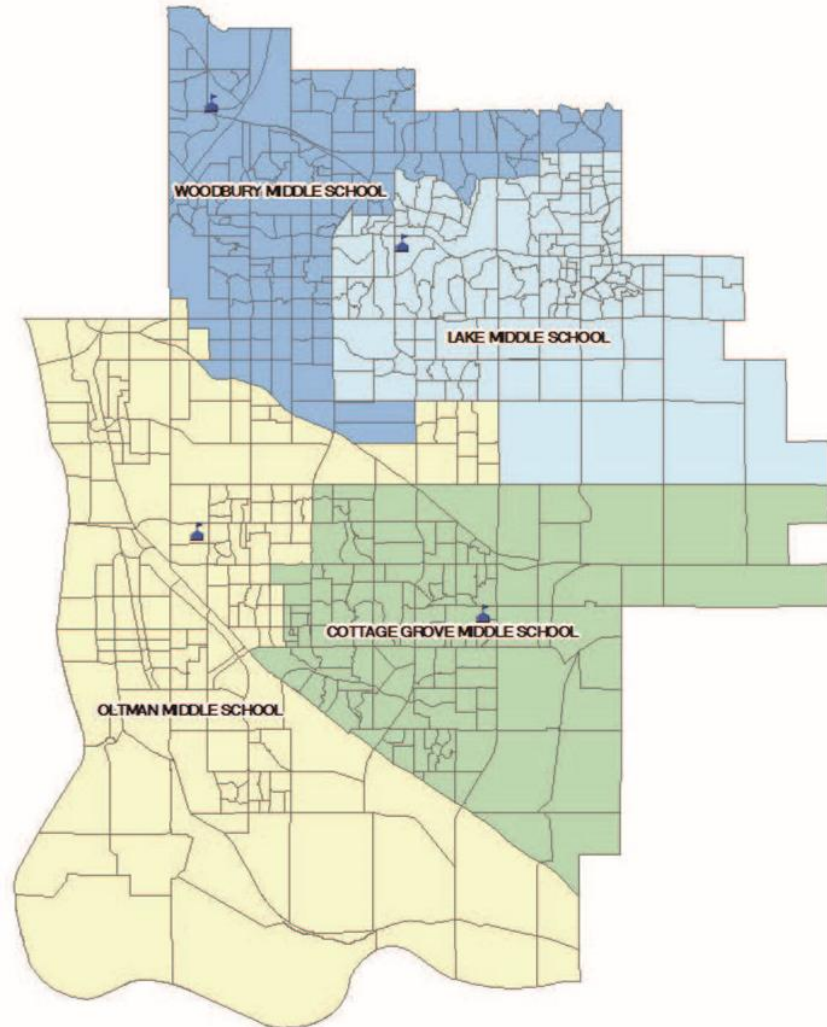
Woodbury Middle School – Attendance Boundaries

so
wash
co
SCHOOLS



Middle School

Attendance Boundaries



Discussion

The background of the slide is white and decorated with numerous circles of two colors: a vibrant green and a light beige. These circles are scattered across the entire page, with some appearing as single dots and others as overlapping pairs. The circles vary in size, with some being noticeably larger than others. The overall effect is a modern, minimalist pattern.

High Schools



2025 Building our Future

East Ridge High School – Projects



Construction of a new classroom addition (originally built for expansion)

Expansion of the cafeteria and kitchen serving area

Construction of additional spaces for Career and Technical Education (CTE) and Science, Technology, Engineering and Math (STEM), including robotics space

Creation of a multipurpose space for online learning

Student capacity approximately 2,400 with potential for future expansion

BOARD-APPROVED GOALS ADDRESSED



- Modernization of classroom space
- Needed renovations (such as bathrooms, kitchens, cafeterias, etc.)
- Curriculum and/or Instructional delivery methods
- Creation of learning spaces that support:
 - College and career ready students by providing flexible, adaptive spaces for learning
 - Environments that inspire social interactions
 - Diverse instructional styles and accommodate multiple forms of collaboration

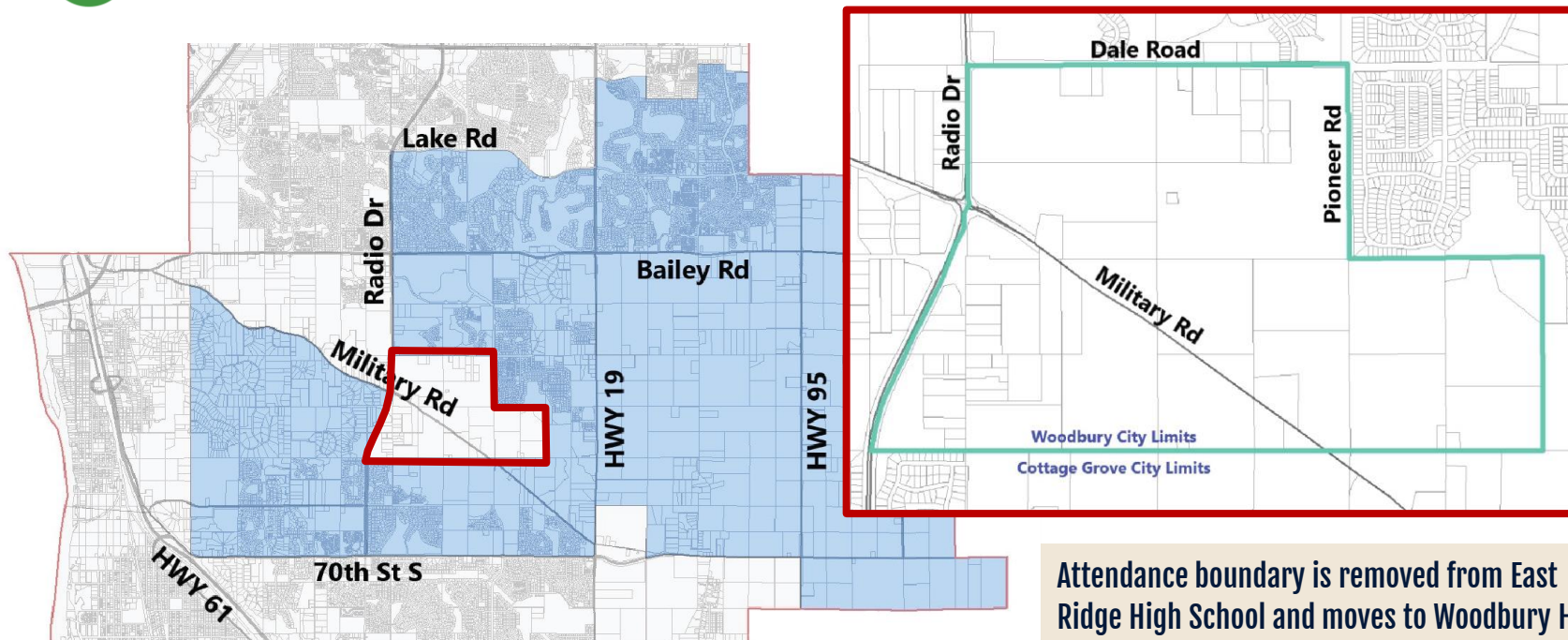


2025

Building our Future

East Ridge High School – Attendance Boundaries

so
wash
co
SCHOOLS



Attendance boundary is removed from East Ridge High School and moves to Woodbury High School

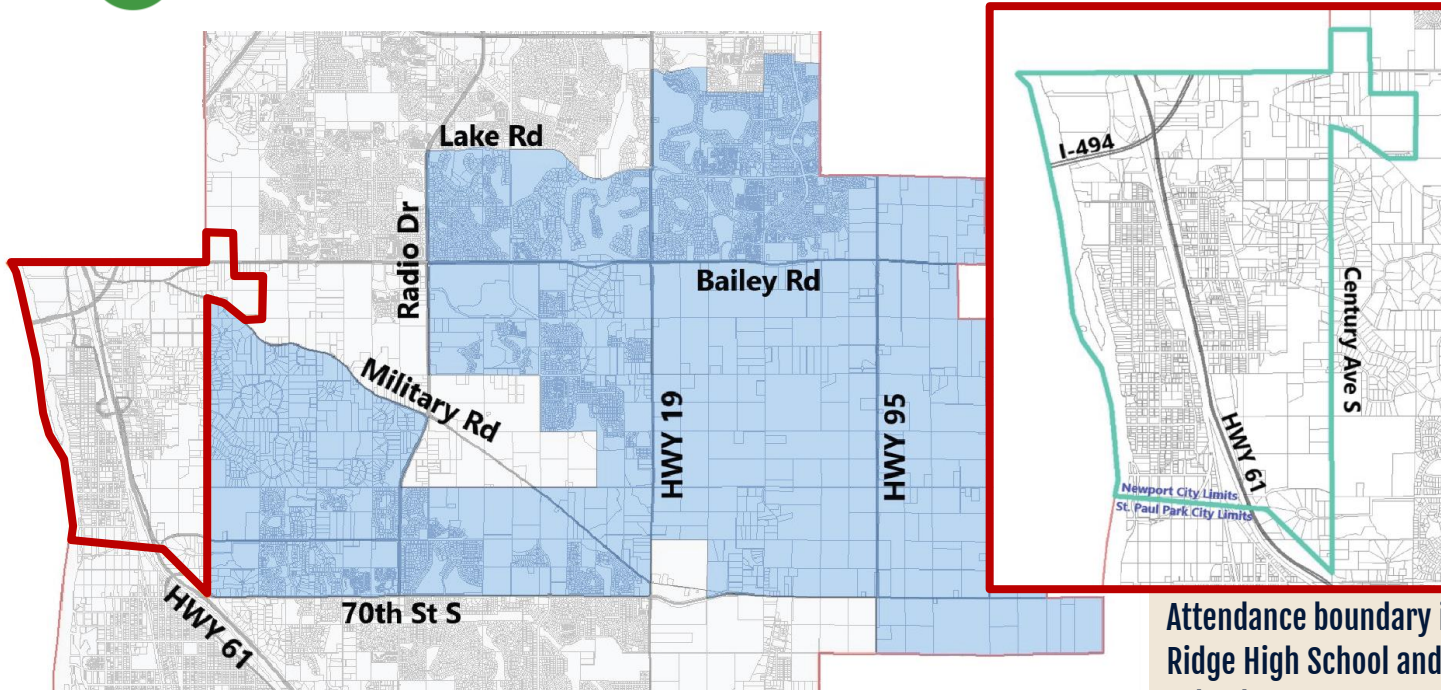


2025

Building our Future

East Ridge High School – Attendance Boundaries

so
Wash
CO
SCHOOLS



Attendance boundary is removed from East Ridge High School and moves to Woodbury High School

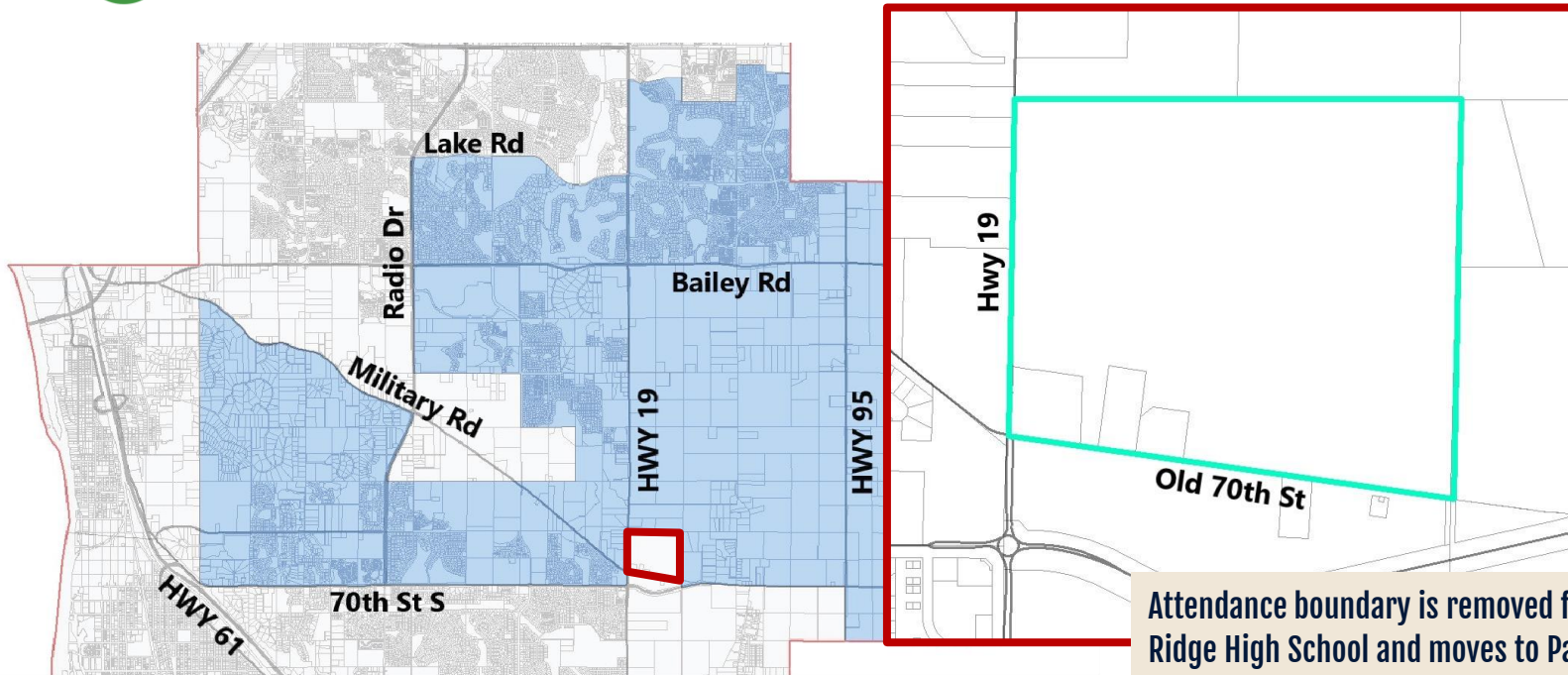


2025

Building our Future

East Ridge High School – Attendance Boundaries

so
Wash
CO
SCHOOLS



Attendance boundary is removed from East Ridge High School and moves to Park High School



2025 Building our Future

Park High School – Projects



Construction of a new classroom addition

Construction of a new cafeteria and kitchen

Renovation and expansion of Career and Technical Education (CTE) and Science, Technology, Engineering and Math (STEM), including robotics space

Renovation to create a centralized student services area

Creation of a multipurpose space for online learning

Complete site redesign to form a larger campus with additional parking, improved athletic fields, increased greenspace, improved traffic flow and increased pedestrian safety

Student capacity approximately 2,400 with potential for future expansion

BOARD-APPROVED GOALS ADDRESSED



- Modernization of classroom space
- Needed renovations (such as bathrooms, kitchens, cafeterias, etc.)
- Curriculum and/or Instructional delivery methods
- Creation of learning spaces that support:
 - College and career ready students by providing flexible, adaptive spaces for learning
 - Environments that inspire social interactions
 - Diverse instructional styles and accommodate multiple forms of collaboration

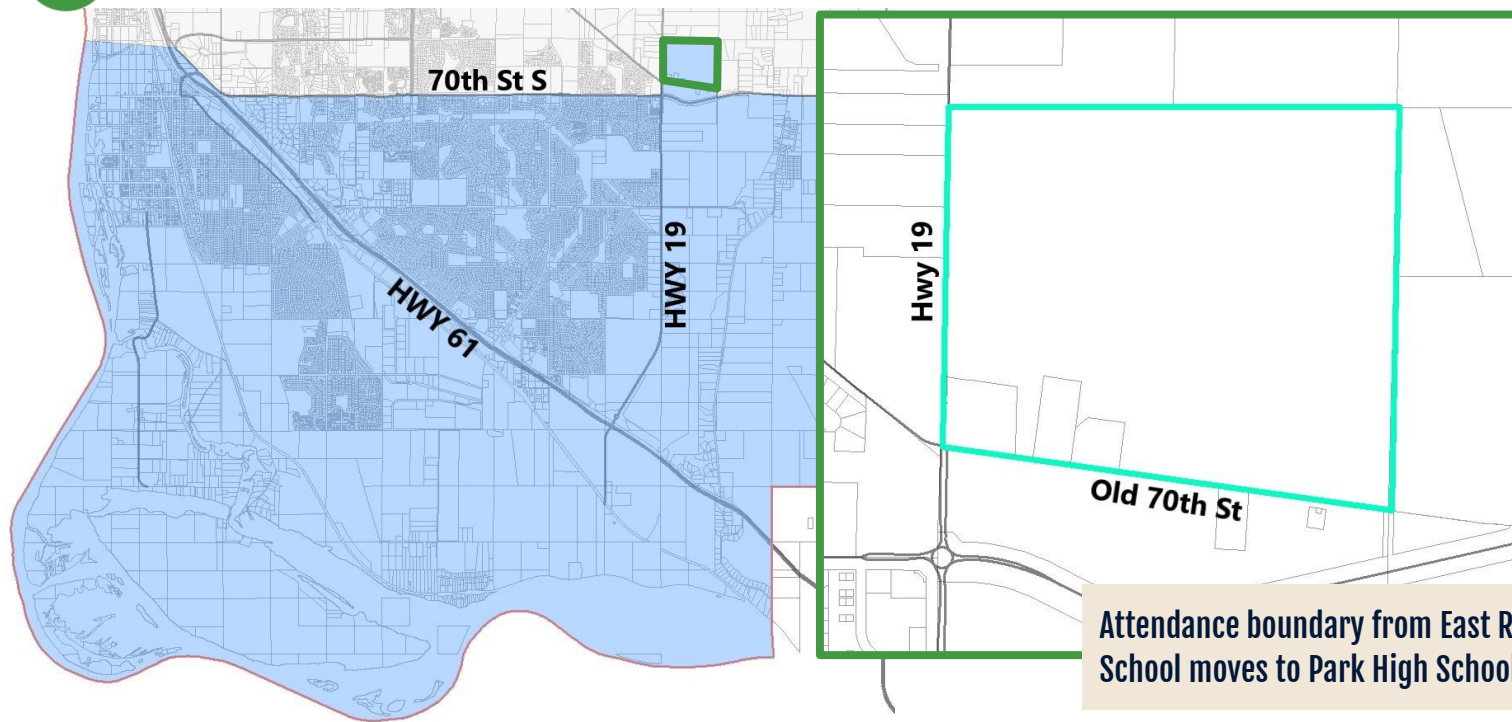


2025

Building our Future

Park High School – Attendance Boundaries

so
wash
co
SCHOOLS





2025 Building our Future

South Washington Alternative High School – Projects



Renovate existing **Crestview Elementary** building into the new **South Washington Alternative High School**

Allows expansion of **Park High School** campus to work with the new **South Washington Alternative High School** campus

Construction of Career and Technical Education (CTE) and Science, Technology, Engineering and Math (STEM) spaces

Provides access to athletic fields and outdoor greenspace

BOARD-APPROVED GOALS ADDRESSED



- Modernization of classroom space
- Needed renovations (such as bathrooms, kitchens, cafeterias, etc.)
- Curriculum and/or Instructional delivery methods
- Alternative high school space
- How buildings/schools will be repurposed
- Creation of learning spaces that support:
 - College and career ready students by providing flexible, adaptive spaces for learning
 - Environments that inspire social interactions
 - Diverse instructional styles and accommodate multiple forms of collaboration



2025 Building our Future

Woodbury High School – Projects



BOARD-APPROVED GOALS ADDRESSED

Construction of a new classroom addition

Construction of a new cafeteria and kitchen

Renovation and expansion Career and Technical Education (CTE) and Science, Technology, Engineering and Math (STEM), including robotics space

Construction of new secure front entry and student services area

Creation of a multipurpose space for online learning

Building redesign, renovation and classroom/department realignment to reduce hallway crowding and increase building flow

Complete site redesign to improve traffic flow and increased pedestrian safety

Student capacity approximately 2,400 with potential for future expansion

- Modernization of classroom space
- Needed renovations (such as bathrooms, kitchens, cafeterias, etc.)
- Curriculum and/or Instructional delivery methods
- Early learning programming
- Special education programming
- Creation of learning spaces that support:
 - College and career ready students by providing flexible, adaptive spaces for learning
 - Environments that inspire social interactions
 - Diverse instructional styles and accommodate multiple forms of collaboration

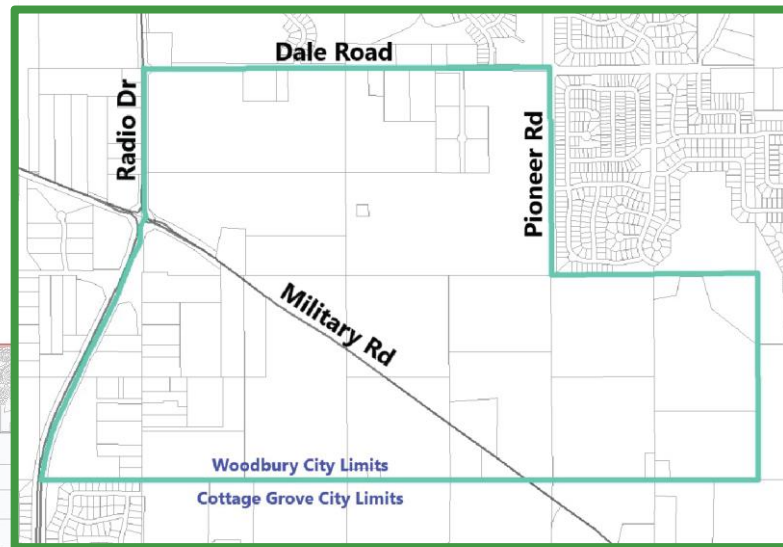
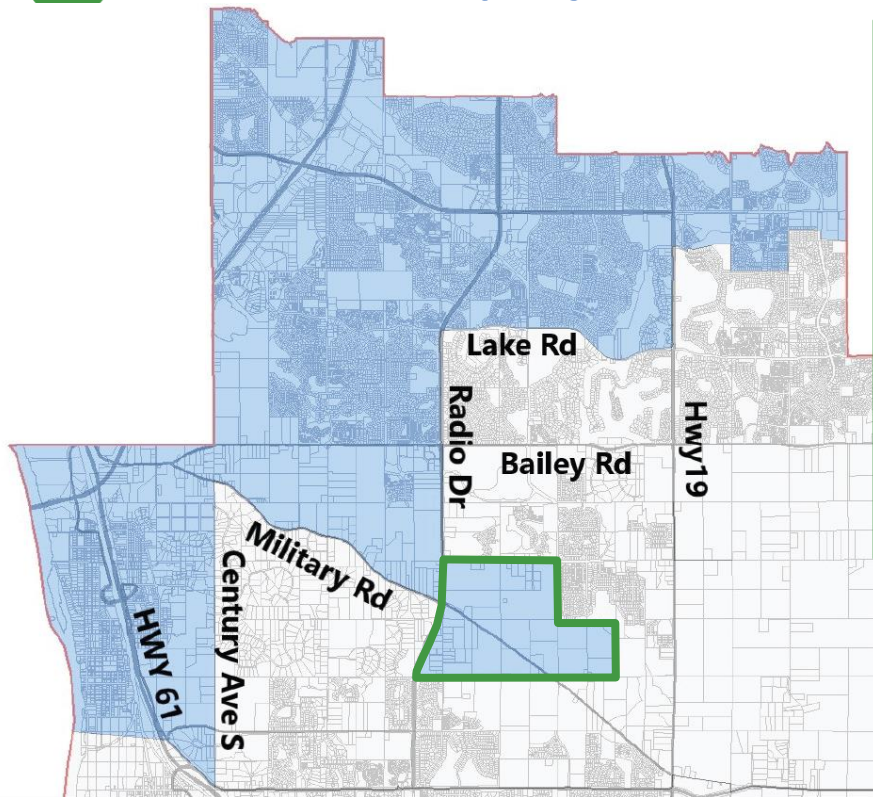


2025

Building our Future

Woodbury High School – Attendance Boundaries

so
wash
co
SCHOOLS



Attendance boundary moves from East Ridge High School to Woodbury High School

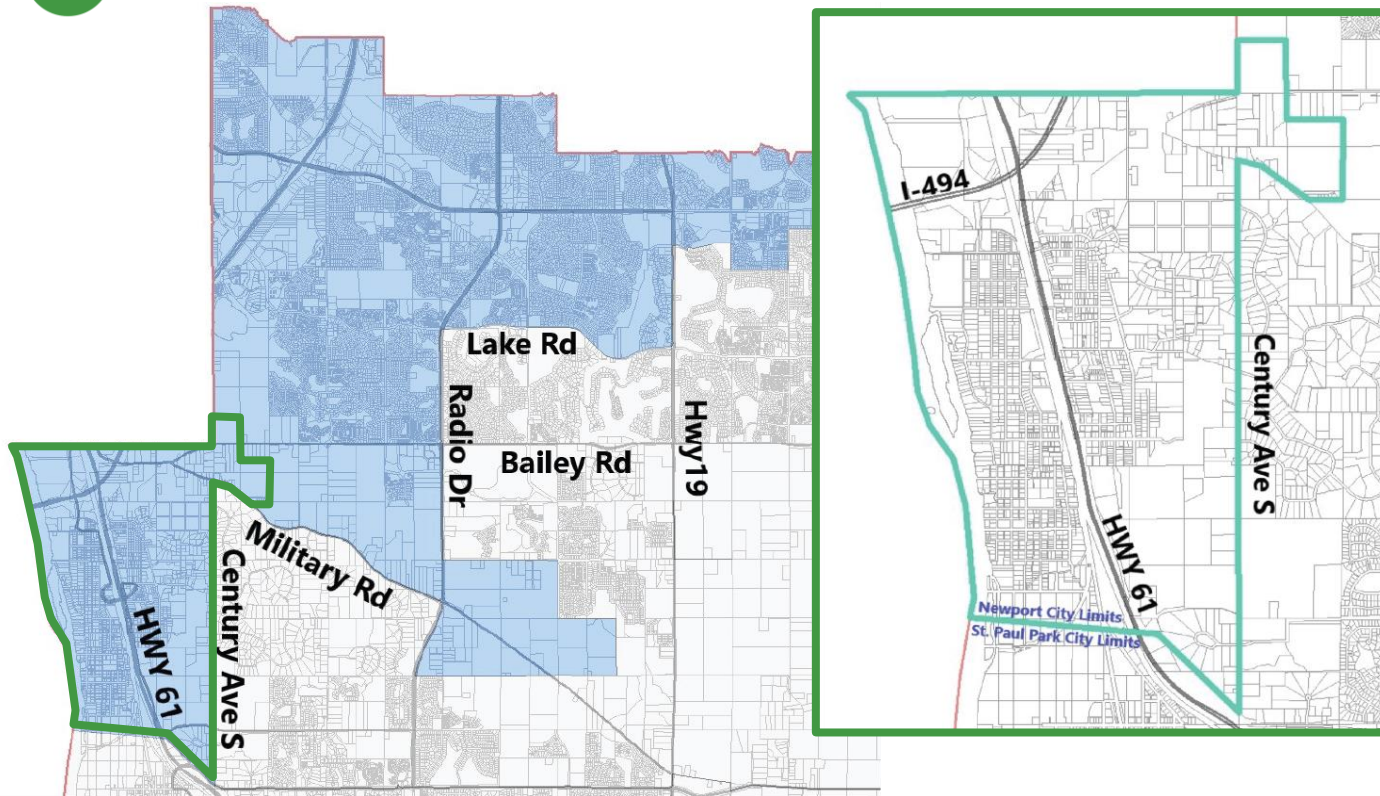


2025

Building our Future

Woodbury High School – Attendance Boundaries

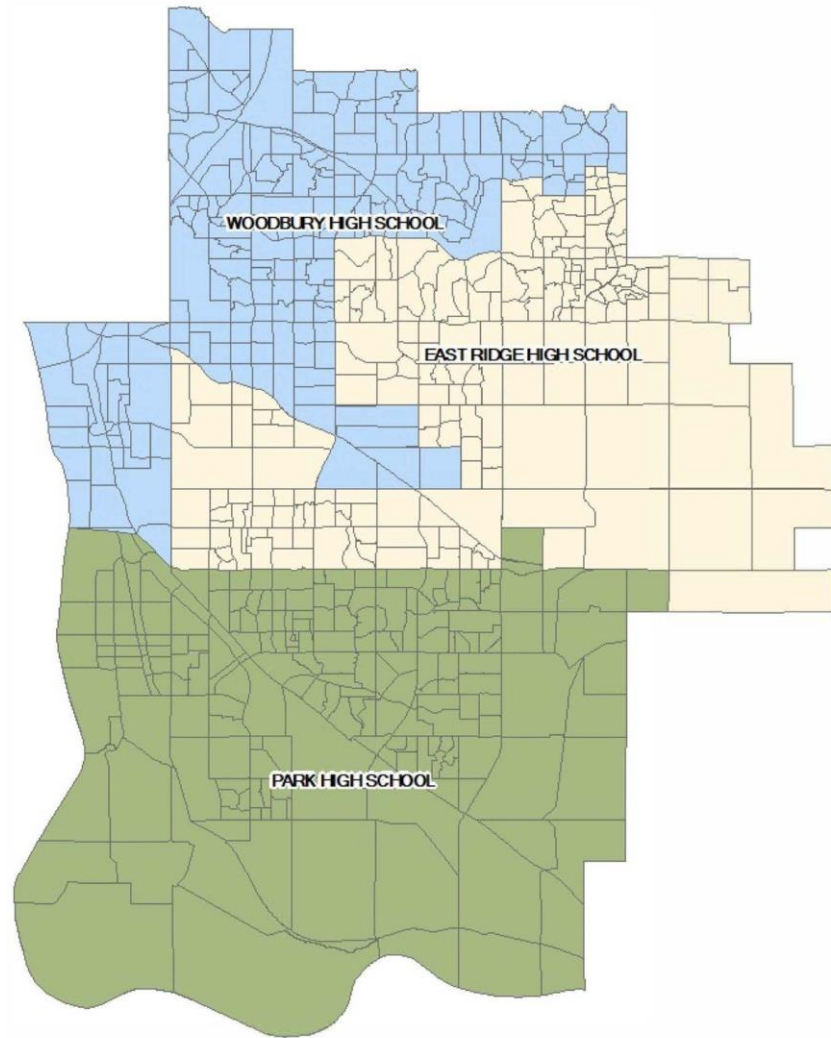
so
Wash
CO
SCHOOLS



Attendance boundary
moves from East Ridge
High School to Woodbury
High School

High School

Attendance Boundaries



Discussion

Special Education and Support Sites



Building our Future²⁰²⁵

District Program Center – Projects



Sell building

BOARD-APPROVED GOALS ADDRESSED



- Alternative high school space



Building our Future²⁰²⁵

District Service Center – Projects



Construction of a centrally-located **District Service Center** on new **Crestview Elementary** campus to consolidate support staff, community education, enrollment services and space for meetings and professional development

Renovate current building to retain operational facilities (warehouse, storage, etc.)

Renovate current building for **Next Step and Pathways** transition programming (18-21) to remain near business and commerce

BOARD-APPROVED GOALS ADDRESSED



- Modernization of classroom space
- Needed renovations (such as bathrooms, kitchens, cafeterias, etc.)
- Curriculum and/or Instructional delivery methods
- Operational facility needs
- Special education programming
- How buildings/schools will be repurposed
- Creation of learning spaces that support:
 - College and career ready students by providing flexible, adaptive spaces for learning
 - Environments that inspire social interactions
 - Diverse instructional styles and accommodate multiple forms of collaboration



2025 Building our Future

Rental Spaces – Projects



Renovate **Central Park** for use by SoWashCo Online, adult basic education and special education

Non-renewal of lease for **Next Step** transition program and relocate program to renovated District Service Center building

Non-renewal of lease for **Pathways** transition program and relocate program to renovated District Service Center building

BOARD-APPROVED GOALS ADDRESSED



- Modernization of classroom space
- Needed renovations (such as bathrooms, kitchens, cafeterias, etc.)
- Curriculum and/or Instructional delivery methods
- Special education programming
- How buildings/schools will be repurposed
- Creation of learning spaces that support:
 - College and career ready students by providing flexible, adaptive spaces for learning
 - Environments that inspire social interactions
 - Diverse instructional styles and accommodate multiple forms of collaboration



Building our Future²⁰²⁵

Transportation – Projects



Current transportation site remains

Construction of a satellite transportation space for additional school bus parking

BOARD-APPROVED GOALS ADDRESSED



- Transportation facility needs
- Operational facility needs



Building our Future²⁰²⁵

Land Purchase



Purchase 120-160 acres of land for future use

BOARD-APPROVED GOALS ADDRESSED

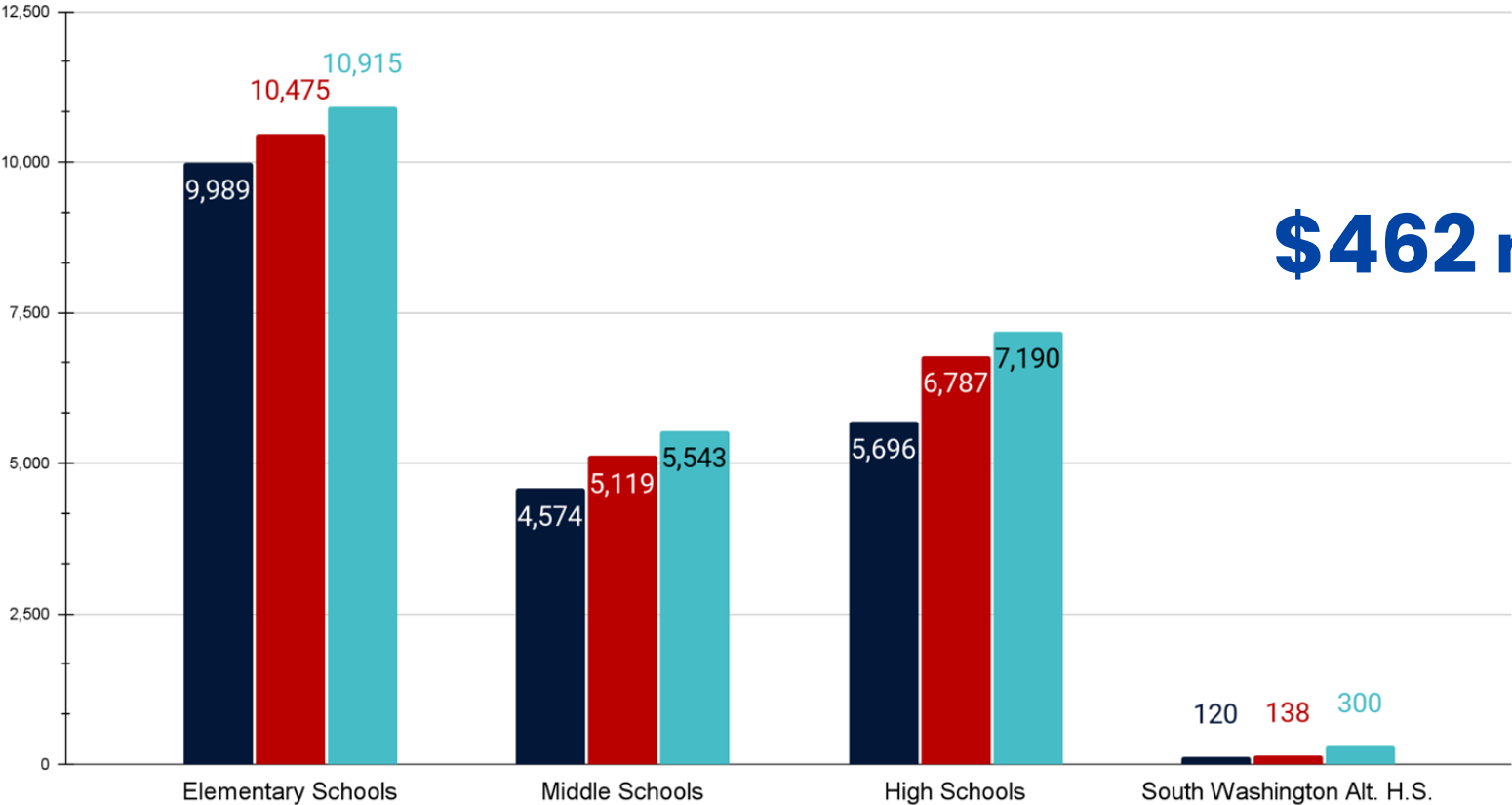


- Enrollment increases from new home construction or changing of boundaries

Discussion

Package Total

■ Current Capacity ■ Projected Enrollment ■ Proposed Capacity

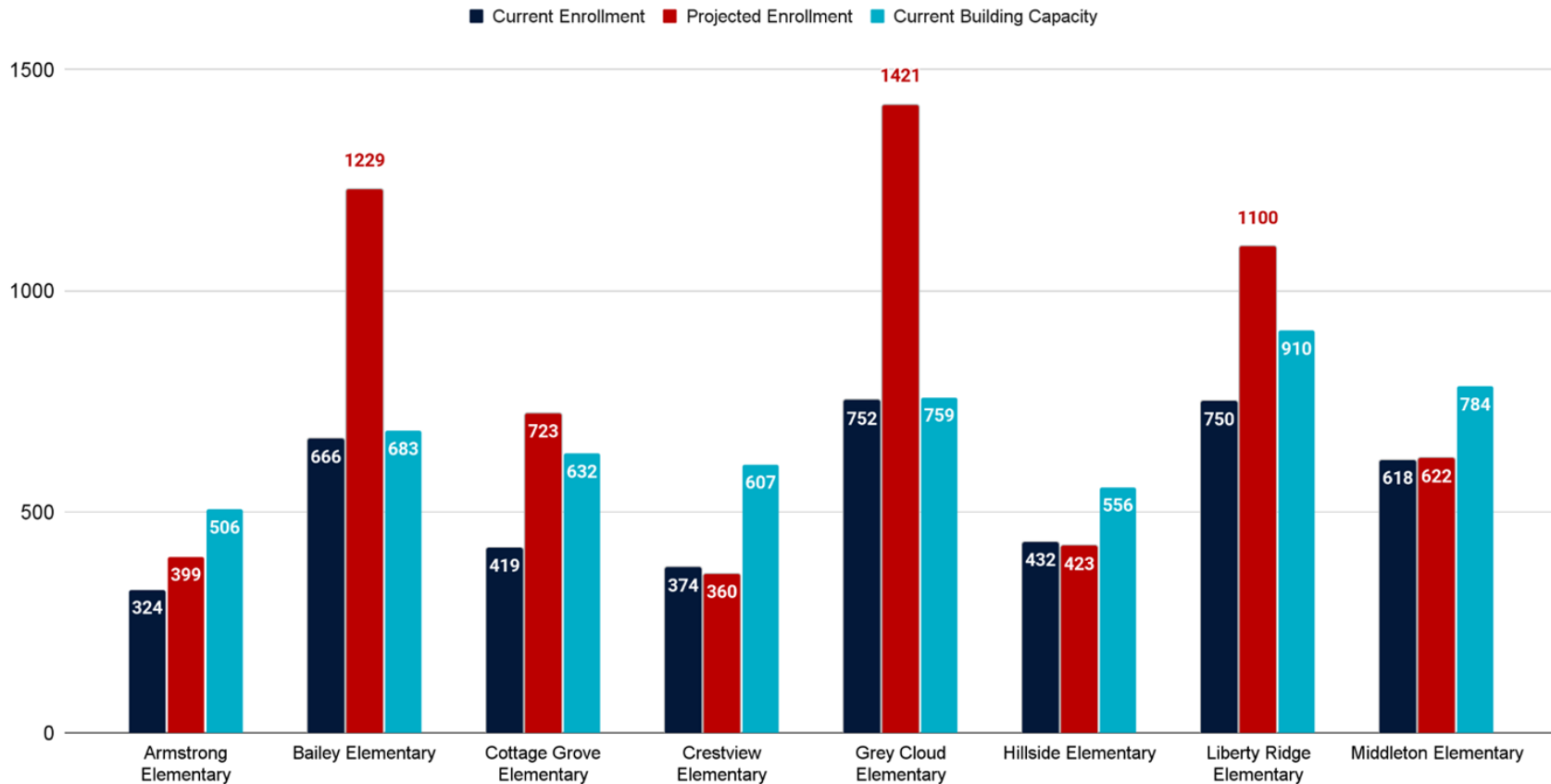


\$462 million

The background of the slide is white and decorated with numerous circles in three colors: dark blue, teal, and beige. Some circles are solid, while others are overlapping, creating a pattern of different shades and sizes. The text is centered in the middle of the slide.

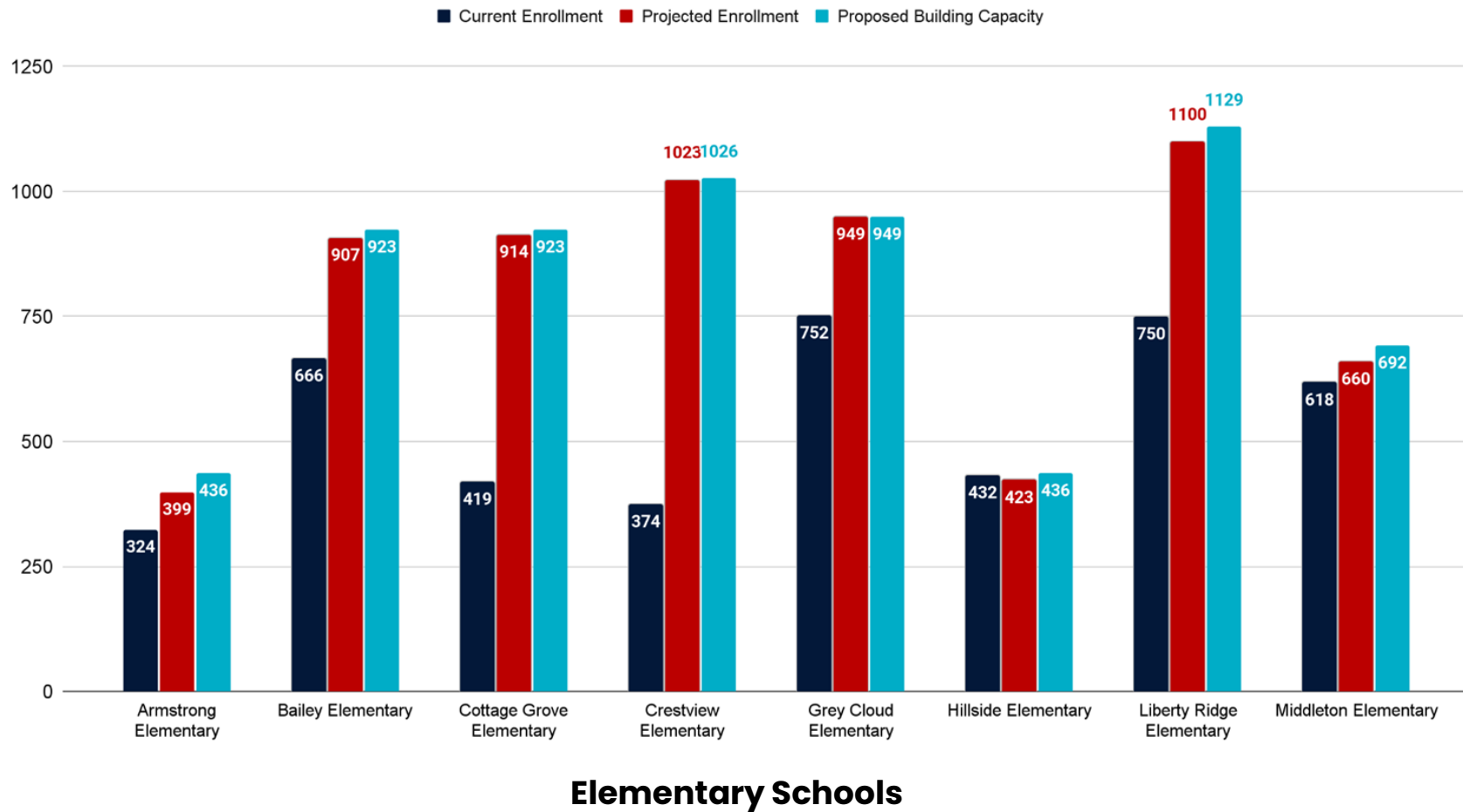
Projected Enrollment and Capacity

If We Did Nothing – 10-year Projected Student Enrollment

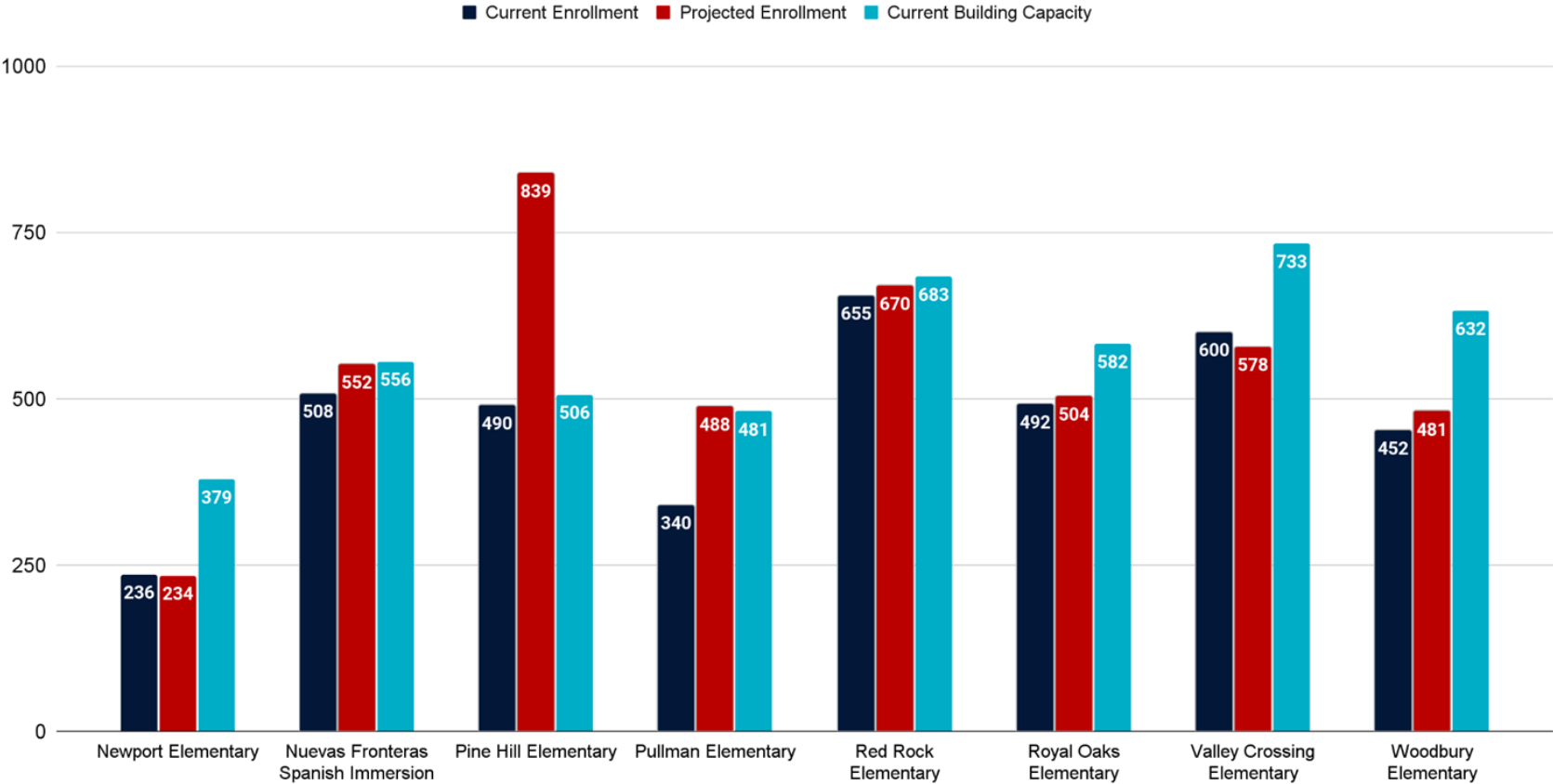


Elementary Schools

If Approved – 10-year Projected Student Enrollment and Capacity

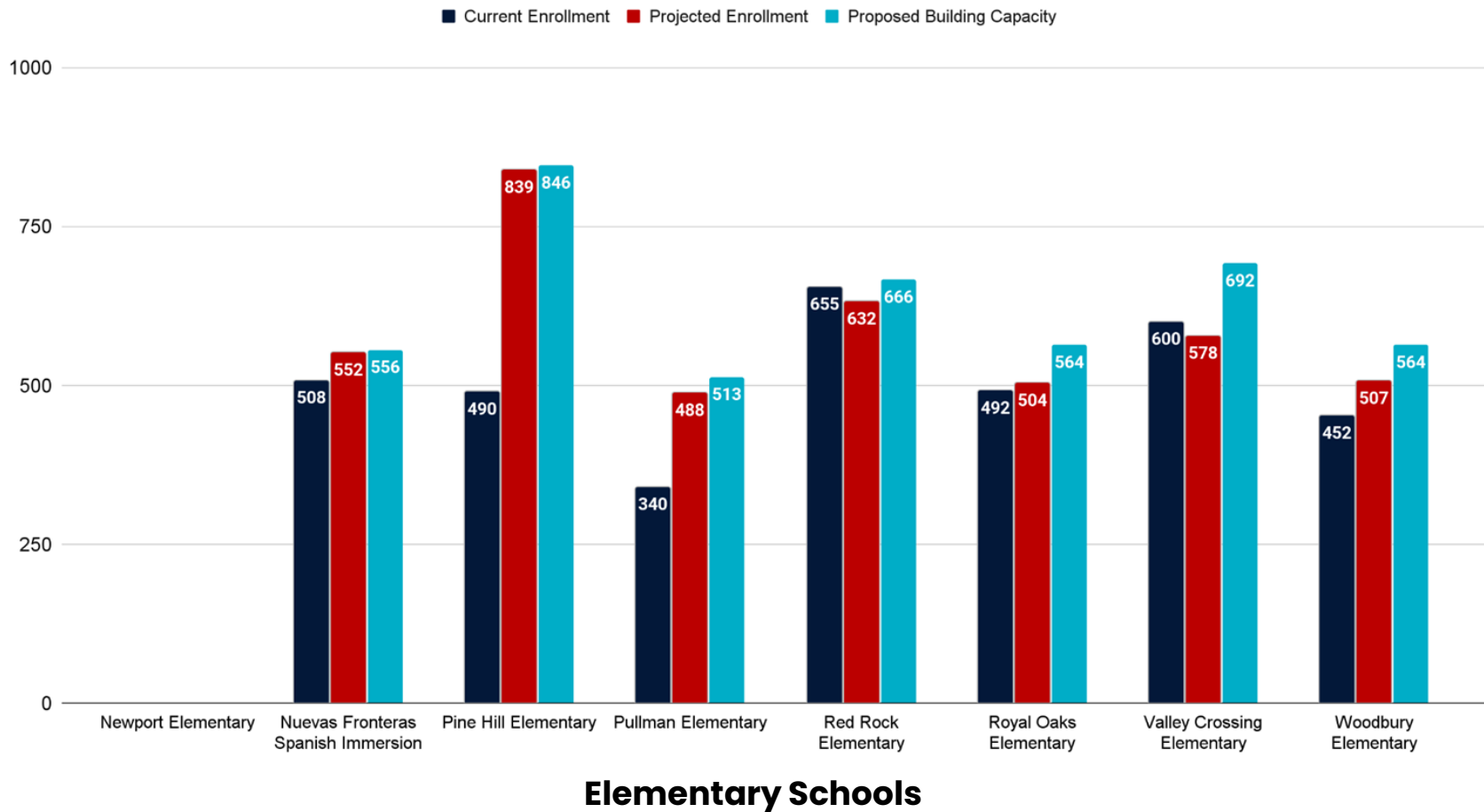


If We Did Nothing – 10-year Projected Student Enrollment

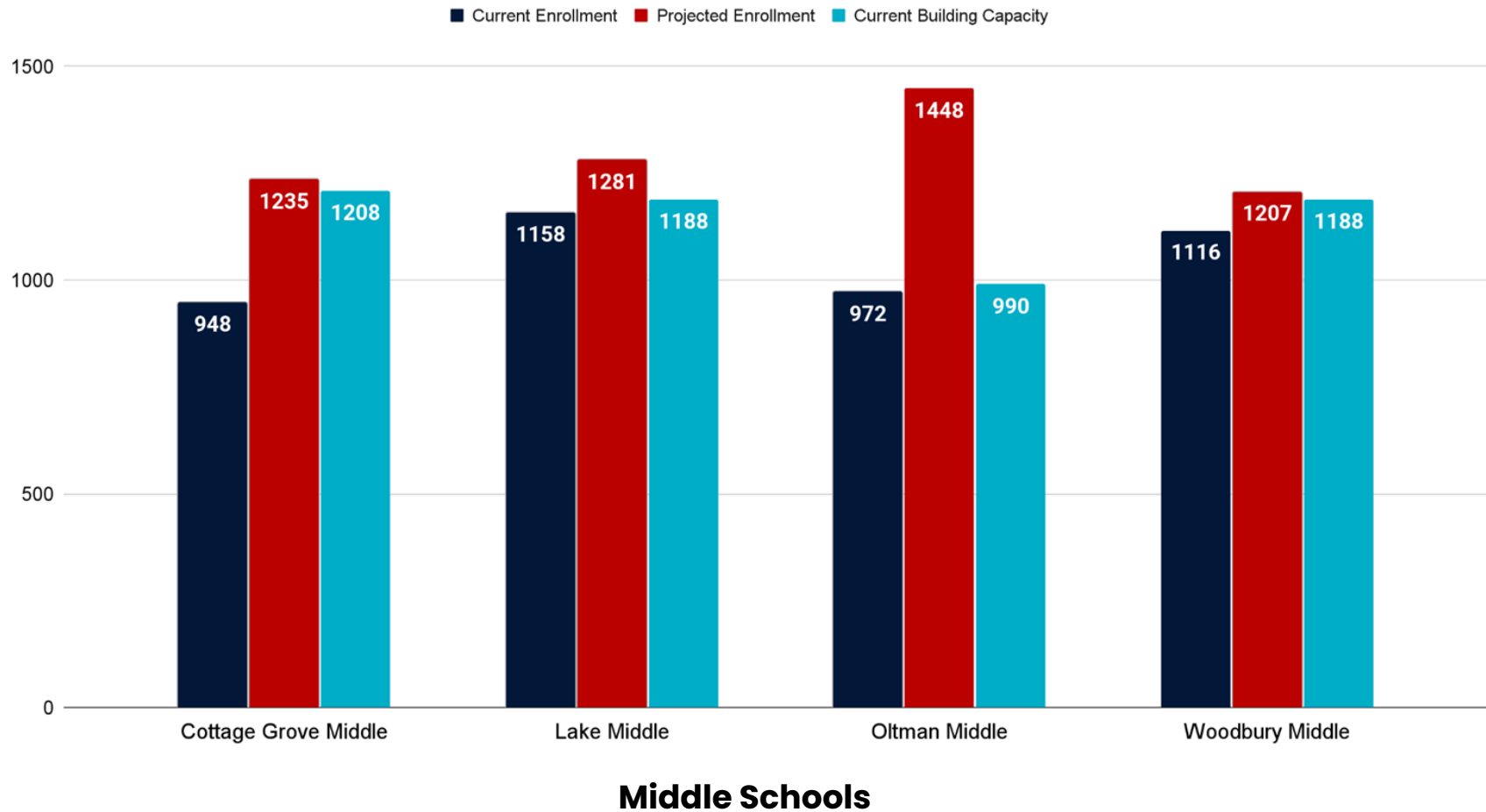


Elementary Schools

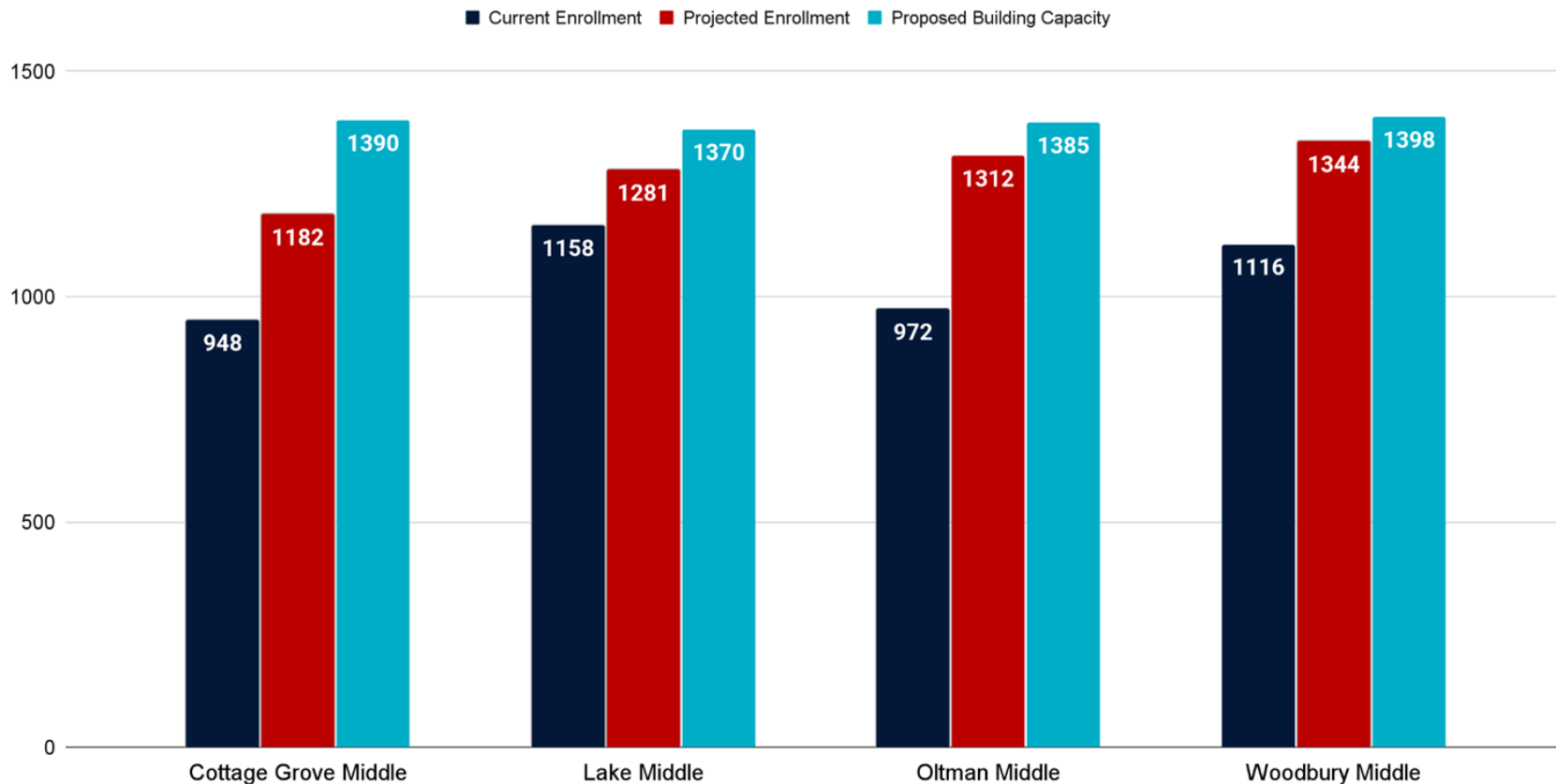
If Approved – 10-year Projected Student Enrollment and Capacity



If We Did Nothing – 10-year Projected Student Enrollment

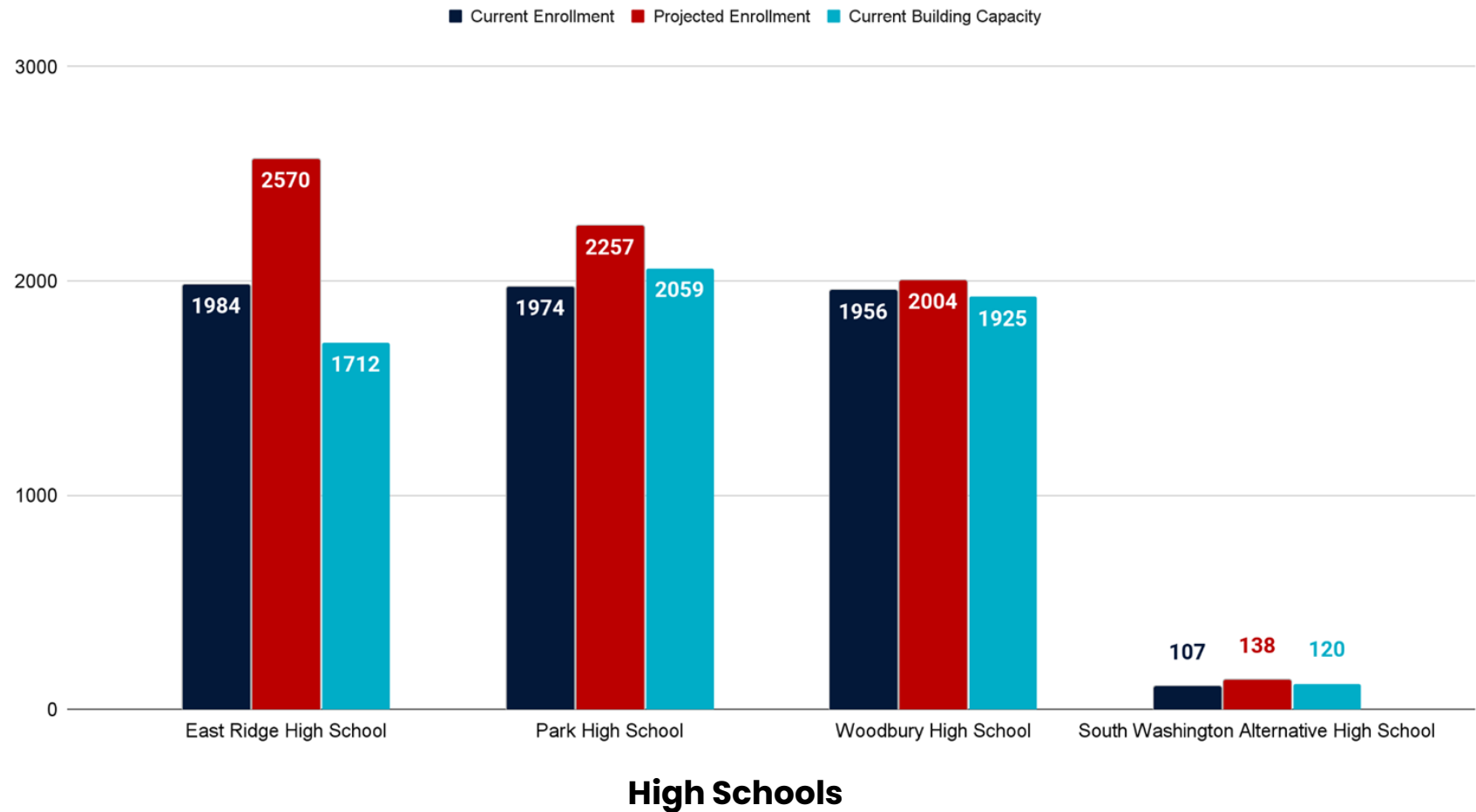


If Approved – 10-year Projected Student Enrollment and Capacity

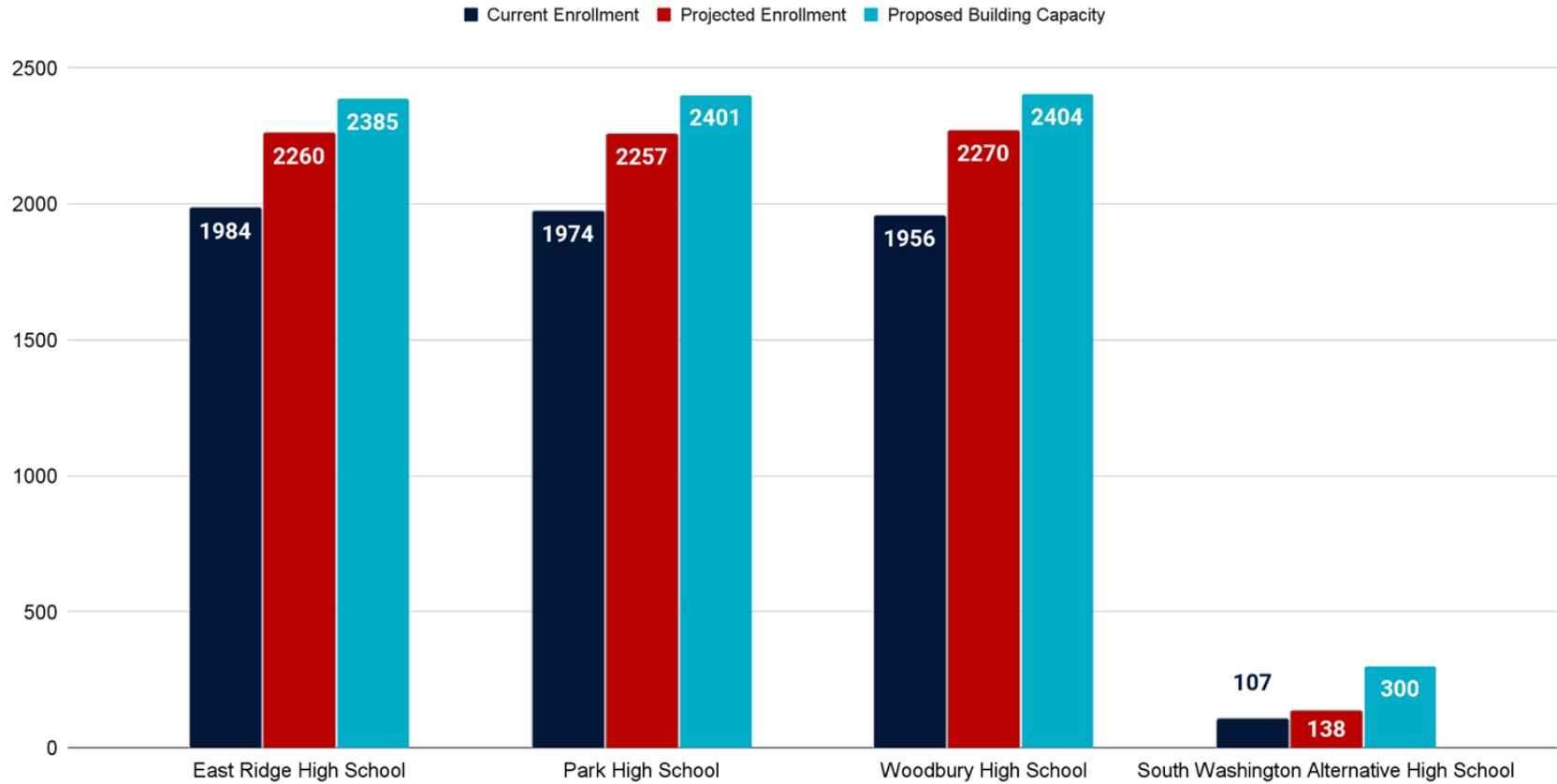


Middle Schools

If We Did Nothing – 10-year Projected Student Enrollment



If Approved – 10-year Projected Student Enrollment



High Schools

The background of the slide is white and decorated with numerous circles in three colors: dark blue, teal, and beige. Some circles are solid, while others are overlapping, creating a pattern of intersecting shapes. The circles are scattered across the entire page, with a higher density around the central text.

Construction Funding

Thank You Voters

Operating Levy for Stability

so
wash
co
SCHOOLS



2025 Building our Future

Bonds for Buildings



BOARD-APPROVED GOALS ADDRESSED



- Creation of a funding plan to address the costs of the 10-year facility plan which will include bonding, lease levies and long-term facility maintenance revenue.

A bond referendum gives voters the opportunity to decide if South Washington County Schools should be authorized to raise construction funding through the sale of bonds.

Bonds allow the District to borrow money that it then pays back over time.

This is the only method to raise enough funds for new construction.

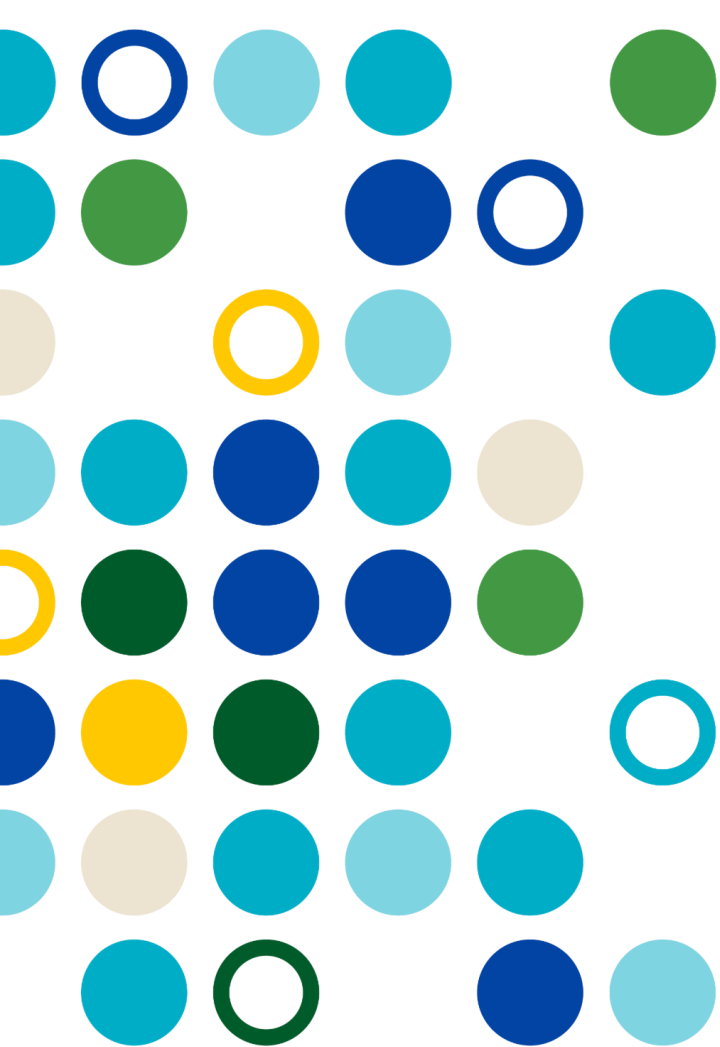
Election proposed for Aug. 9, 2022

Tax Impact \$462 Million

Estimated Tax Impact		
Home Value	Monthly	Annually
\$200,000	\$15	\$175
\$250,000	\$19	\$227
\$300,000	\$23	\$280
\$350,000	\$28	\$333
\$400,000	\$32	\$386
\$500,000	\$40	\$484

The average value home in the district is approximately \$300,000.

Construction funding
does not take money
away from
education funding.



What if the Bond Does Not Pass?

AUG. 9, 2022



- Earliest election to return to voters is Feb. 2023
- Moderate to extensive attendance boundary changes prior to 2025
- Explore temporary portable trailers at some school sites
- Consider alternative scheduling options for high schools
- Review grade configurations at all levels
- Increase rental space for learning and instruction
- Higher than average class sizes remain in overcrowded schools
- Begin alternative long-range facility planning

The background of the slide is white and decorated with numerous circles of three colors: yellow, red, and beige. These circles are scattered across the page, with some appearing as single dots and others as overlapping pairs. The text "Next Steps" is centered in a dark blue, sans-serif font.

Next Steps



Next Steps

- Gather feedback from the long-range facility task force
- Hold community and staff information sessions
- Gather feedback from district advisory groups
- Present final plan for approval in April



Information Sessions



COMMUNITY INFORMATION SESSIONS

- **In-person:**
 - 6–7:30 p.m., March 15
 - Oltman Middle School
 - 6625 Goodview Ave. S., Cottage Grove
- **Virtual:** 5:30–7 p.m., March 17

STAFF INFORMATION SESSIONS

- **Virtual:** 12–1:30 p.m., March 14
- **Virtual:** 5:30–7 p.m., March 22

sowashco.org/facilityplanning



Questions?