

# 2022–23 School and Enrollment Guide

## Enroll Now In:

- Preschool and Pre-kindergarten
- Grades K-12
- Elementary Magnet Programs

**NEW** • SoWashCo Online

Priority Enrollment  
Deadline:  
Friday, Feb. 11, 2022

Enroll Online at  
[sowashco.org/enroll](https://sowashco.org/enroll)

**SoWashCo**  
SCHOOLS

COTTAGE GROVE | NEWPORT | ST. PAUL PARK | WOODBURY | AFTON | DENMARK | GREY CLOUD ISLAND

# Elementary School Tour Schedule



School	Date	Time	School	Date	Time
Armstrong Elementary	Wednesday, Jan. 12	10-11 a.m.	Newport Elementary	Tuesday, Jan. 11	10-11 a.m.
	Wednesday, Jan. 19			Tuesday, Jan. 18	
	Wednesday, Jan. 26			Tuesday, Jan. 25	
	Wednesday, Feb. 2			Tuesday, Feb. 1	
	Wednesday, Feb. 9			Tuesday, Feb. 8	
Bailey Elementary	Tuesday, Jan. 11	10-11 a.m.	Nuevas Fronteras Spanish Immersion	Thursday, Jan. 13	4:15-4:45 p.m.
	Tuesday, Jan. 18			Thursday, Jan. 20	
	Tuesday, Jan. 25			Thursday, Jan. 27	
	Tuesday, Feb. 1			Thursday, Feb. 3	
	Tuesday, Feb. 8			Thursday, Feb. 10	
Cottage Grove Elementary	Tuesday, Jan. 11	9:30-10:30 a.m.	Pine Hill Elementary	Tuesday, Jan. 11	3:30-4 p.m.
	Tuesday, Jan. 18			Tuesday, Jan. 18	
	Tuesday, Jan. 25			Tuesday, Jan. 25	
	Tuesday, Feb. 1			Tuesday, Feb. 1	
	Tuesday, Feb. 8			Tuesday, Feb. 8	
Crestview Elementary	Tuesday, Jan. 11	9-10 a.m.	Pullman Elementary	Wednesday, Jan. 12	10-11 a.m.
	Tuesday, Jan. 18			Wednesday, Jan. 19	
	Tuesday, Jan. 25			Wednesday, Jan. 26	
	Tuesday, Feb. 1			Wednesday, Feb. 2	
	Tuesday, Feb. 8			Wednesday, Feb. 9	
Grey Cloud Elementary	Tuesday, Jan. 11	9:30-10:30 a.m.	Red Rock Elementary	Friday, Jan. 14	8:30-9 a.m.
	Tuesday, Jan. 18			Friday, Jan. 21	
	Tuesday, Jan. 25			Friday, Jan. 28	
	Tuesday, Feb. 1			Friday, Feb. 4	
	Tuesday, Feb. 8			Friday, Feb. 11	
Hillside Elementary	Tuesday, Jan. 11	9-10 a.m.	Royal Oaks Elementary	Thursday, Jan. 13	9:30-10:30 a.m.
	Tuesday, Jan. 18			Thursday, Jan. 20	
	Tuesday, Jan. 25			Thursday, Jan. 27	
	Tuesday, Feb. 1			Thursday, Feb. 3	
	Tuesday, Feb. 8			Thursday, Feb. 10	
Liberty Ridge Elementary	Wednesday, Jan. 12	10-11 a.m.	Valley Crossing Elementary	Thursday, Jan. 13	4:15-4:45 p.m.
	Wednesday, Jan. 19			Thursday, Jan. 20	
	Wednesday, Jan. 26			Thursday, Jan. 27	
	Wednesday, Feb. 2			Thursday, Feb. 3	
	Wednesday, Feb. 9			Thursday, Feb. 10	
Middleton Elementary	Wednesday, Jan. 12	10-11 a.m.	Woodbury Elementary	Tuesday, Jan. 11	9:30-10:30 a.m.
	Wednesday, Jan. 19			Tuesday, Jan. 18	
	Wednesday, Jan. 26			Tuesday, Jan. 25	
	Wednesday, Feb. 2			Tuesday, Feb. 1	
	Wednesday, Feb. 9			Tuesday, Feb. 8	

# School Tours

Come visit your child's prospective boundary school or elementary magnet program. The principal or an administrator will guide you through the building where you can learn about all the educational opportunities and activities that are available. **Face masks are required for elementary and middle school tours.** Face masks are highly recommended for high school tours. Learn more and sign up at [sowashco.org/enroll](https://sowashco.org/enroll).



## Middle School Tour Schedule

Cottage Grove Middle School | Lake Middle School | Oltman Middle School | Woodbury Middle School

Date	Morning	Afternoon	Late Afternoon/Evening
Tuesday, Jan. 11	8-10 a.m.	12-1:30 p.m.	3-4:30 p.m.
Tuesday, Jan. 18	8-10 a.m.	12-1:30 p.m.	3-4:30 p.m.
Tuesday, Jan. 25	8-10 a.m.	12-1:30 p.m.	3-4:30 p.m.
Tuesday, Feb. 1	8-10 a.m.	12-1:30 p.m.	3-4:30 p.m.
Tuesday, Feb. 8	8-10 a.m.	12-1:30 p.m.	3-4:30 p.m.

## High School Tour Schedule

East Ridge High School | Park High School | Woodbury High School

Date	Morning	Afternoon	Evening
Monday, Jan. 10	---	---	4-6 p.m.
Tuesday, Jan. 11	9-11 a.m.	1-3 p.m.	---
Tuesday, Jan. 18	9-11 a.m.	1-3 p.m.	---
Thursday, Jan. 20	---	---	4-6 p.m. *East Ridge and Park High Schools Only
Tuesday, Jan. 25	9-11 a.m.	1-3 p.m.	---
Thursday, Jan. 27	---	---	4-6 p.m. *Woodbury High School Only
Tuesday, Feb. 1	9-11 a.m.	1-3 p.m.	---
Tuesday, Feb. 8	9-11 a.m.	1-3 p.m.	---

**NOTE:** South Washington Alternative High School tours are available upon request. Please call 651-425-7000 to schedule a tour.



# How to Enroll in SoWashCo Schools (PreK-12)

## Review

- Find your boundary school using our boundary school calculator at [sowashco.org/enroll](https://sowashco.org/enroll)
- Determine if an elementary magnet program or SoWashCo Online (Grades: K-5 or 9-12) is right for your child

## Gather

Gather your child's:

- Proof of Birth
- Immunization records
- Address verifications
- Proof of completion of state required early childhood screening for families enrolling in preschool, pre-kindergarten or kindergarten
  - More information on early childhood screening can be found on page 8

## Enroll

- Visit [sowashco.org/enroll](https://sowashco.org/enroll) and complete an online enrollment form by **Friday, Feb. 11, 2022** for priority enrollment
  - Enrollment applications for an elementary magnet program must be completed by **Friday, Feb. 11, 2022**

## Notification

- Families will be notified of child's enrollment of a magnet program by the March.
- All families will receive open house information by August

## Enroll in SoWashCo Online

### Current SoWashCo Schools Students (Grades K-4 and 8-11)

- If you wish to transfer your current K-4 or 8-11 child from a SoWashCo boundary school to SoWashCo Online for the 2022-23 school year, please complete the intra-district transfer form available at [sowashco.org/enroll](https://sowashco.org/enroll).
- Students in grades 8-11 should meet with their counselor. If interested in taking online classes as part of their 2022-23 school year schedule at their current SoWashCo high school. For a full list of available courses, visit [sowashco.org/courseguide](https://sowashco.org/courseguide) and sort by "online" classes.

### Students Living in SoWashCo Schools District (Not Currently Enrolled)

- If you live within the SoWashCo Schools boundary but your child is NOT currently enrolled in a SoWashCo School, please complete a pre-enrollment form at [sowashco.org/enroll](https://sowashco.org/enroll).

### Students that Live Outside of SoWashCo Schools District

- Students that do not live within SoWashCo Schools boundaries can begin the enrollment process for SoWashCo Online by visiting [sowashco.org/enroll](https://sowashco.org/enroll).





# Enrollment Details



## An enrollment application *is required* for:

- Children entering kindergarten
- Children that are new to the district
- Full-time enrollment to SoWashCo Online (Grades K-5, 9-12)

**NOTE:** Early childhood screening is required by the State of Minnesota prior to entering Pre-K or kindergarten.

## An enrollment application *is not required* for:

- Students continuing on to the next grade level at SoWashCo Schools

### Admission Priorities

#### Priority is given to students who:

- Live within the area of their boundary school
- Live within SoWashCo Schools district boundaries
- Are children of SoWashCo Schools employees
- Are siblings of current open enrolled students attending SoWashCo Schools
  - Sibling priority does not guarantee acceptance into the district

### Other Considerations

- Students living outside of SoWashCo Schools boundaries are admitted to district schools if space allows.
  - **Families must complete an open enrollment form** which can be found at [sowashco.org/enroll](http://sowashco.org/enroll).

## Applying for an Elementary Magnet Program

### Lottery Process

- Enrollment for Nuevas Fronteras Spanish Immersion and Valley Crossing Multiage magnet programs are determined by a lottery process.
- Families will be notified of lottery results by March.
- Families not selected in the lottery process will be placed on a waiting list for one year and will be enrolled in their boundary school.

### Admission for Current Students

Students who will be in grades 1-5 next school year and want to apply for one of SoWashCo Schools magnet programs must fill out an intra-district transfer form (IDT). Students will be admitted if space allows and eligibility requirements are met. Learn more about IDTs on page 31 or at [sowashco.org/enroll](http://sowashco.org/enroll).

**The deadline to apply for a magnet program is Friday, February 11, 2022. Families will be notified of placement in March.**

# Table of Contents

School Tour Dates	2-3
How to Enroll in SoWashCo Schools	4
Enrollment Details	5
School Bus Transportation	7
Early Childhood Education Programs	8-9
Before and After School Programs	10-11
Special Education Services	12-13
Talent Development and Advanced Academics	14
Student Support Services	15
Elementary Schools	16-22
Middle Schools	23-25
High Schools	26-28
District Directory	29-30
Enrollment Questions and Answers	31
Health Questions and Answers	32
Immunization Requirements	33
Nutrition Services	34
Educational Benefits	35
Parent Resources	36

## About SoWashCo Schools

South Washington County Schools (SoWashCo Schools) is located southwest of St. Paul. The district includes all or parts of the communities of Cottage Grove, Newport, St. Paul Park, Woodbury and Afton, Denmark and Grey Cloud Island Townships. SoWashCo has 16 elementary schools, four middle schools, four high schools and an online school, SoWashCo Online, for students in grades K-5 and students in grades 9-12.

**Be seen. Be heard. Be bold.**

## Stay Connected



fb.me/SoWashCoSchools



Follow us @SoWashCoSchools



SoWashCoSchools



SoWashCoSchools



South Washington County Schools

## Important Dates



### Monday, Jan. 10

- Priority Enrollment Begins
- School Tours Begin



### Friday, Feb. 11

- School Tours End
- Priority Enrollment and Magnet Program Application Deadline



### August

- School Open Houses

**SoWashCo**  
SCHOOLS

# School Bus Transportation

SoWashCo Schools strives to provide safe, reliable and efficient transportation to students who live in the school district. We work to ensure students arrive at school on time and ready to learn. We provide transportation to every K-12 student living within the transportation guidelines.

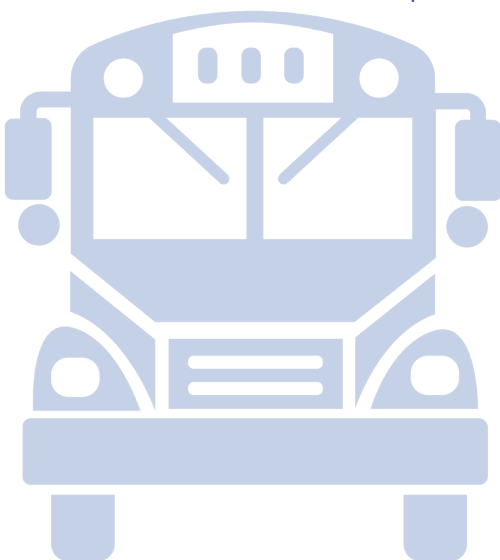
Grade / Program	Transportation Services
K-5	School bus transportation will be provided per transportation guidelines to elementary students who live <b>more than one mile</b> from their boundary school.
6-8	School bus transportation will be provided per transportation guidelines to middle school students who live <b>more than one-and-a-half miles</b> from their boundary school.
9-12	School bus transportation will be provided per transportation guidelines to high school students who live <b>more than two miles</b> from their boundary school.
Elementary Magnet and Gateway Programs	School bus transportation will be provided per transportation guidelines to students living <b>more than one mile</b> from Nuevas Fronteras Spanish Immersion and Valley Crossing Elementary Schools.

**\*Information is subject to change**

## Child Care Transportation

Students in grades K-5 are eligible to be considered for an alternate bus stop for child care purposes. The licensed child care provider must be located in the same boundary school attendance area where the child is enrolled. **The pick-up and drop-off locations must be the same location each morning and afternoon.**

Pick-up at home	➔	Drop-off at child care facility
Pick-up at child care facility	➔	Drop-off at child care facility
Pick-up at child care facility	➔	Drop-off at home



**Please Note:** Transportation boundaries are subject to change. Open enrolled and intra-district transfer students (students attending a school other than their boundary school) whose parent or guardian has signed a waiver of transportation are not eligible for transportation services regardless of the distance. Learn more at [sowashco.org/transportation](https://sowashco.org/transportation).



# Early Childhood Education

SoWashCo Schools Early Childhood Education programs are offered through Community Education. Our early learning programs offer engaging, enriching and personalized experiences for our earliest learners from birth to age five.

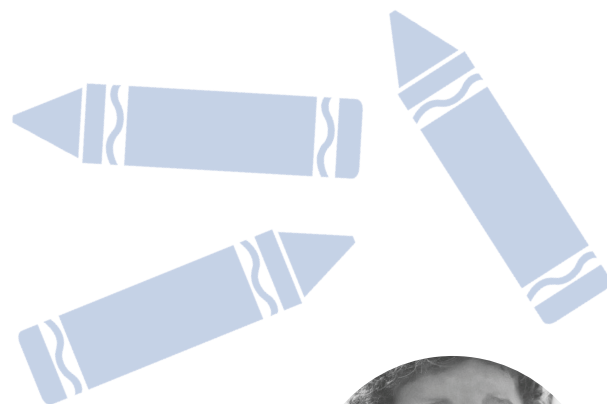
## Early Childhood Family Education

Early Childhood Family Education (ECFE) is an educational program for families with children from birth to age five (not yet in kindergarten). ECFE helps parents support their child's growth and development. Classes are taught by licensed early childhood teachers and licensed parent educators. Visit [sowashco.org/ecfe](http://sowashco.org/ecfe) to learn more about classes, costs, times, locations or to register.

## Early Childhood Special Education

Early Childhood Special Education (ECSE) provides programs and services for young children with disabilities from birth to age five. Services are provided for children from birth to two years old in a home setting. Children age three to five are provided services in a preschool designed to meet their educational needs. A referral to early intervention services can be made through Amy Whinnery at 651-425-6134. To learn more about ECSE, visit [sowashco.org/ecse](http://sowashco.org/ecse).

**\*Times, prices and locations are subject to change for all early learning programs.**



## Early Childhood Screening

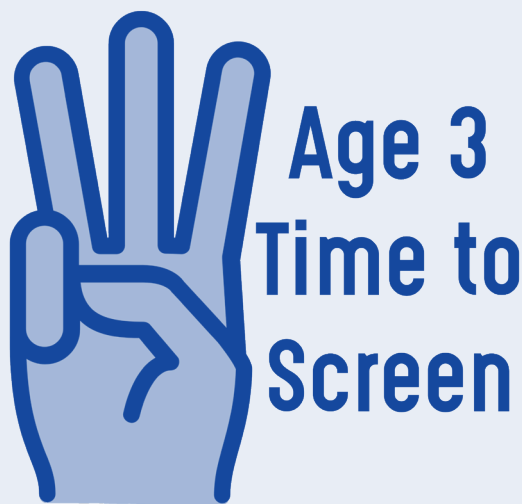
Early childhood screening is a free and simple check of how your child is growing, developing and learning.

Screening is required by the State of Minnesota for any child enrolling in a public school and is provided free of charge. While screening is required prior to kindergarten, it is recommended screening be done at age three and is required prior to enrollment in preschool and pre-kindergarten programs.

During screening a trained professional will check:

- Vision and hearing
- Height and weight
- Immunization history
- Large and small muscles
- Thinking, language and communication skills
- Social and emotional development

To learn more, visit [sowashco.org/screening](http://sowashco.org/screening)



# Early Childhood Education

## Preschool

Preschool supports a child's social-emotional growth while also increasing skills in language, literacy and physical development for future success. Preschool offers a great environment where children can create important social connections with their peers.

## Threes Preschool and Multiage Preschool

Threes Preschool and Multiage Preschool offers three, four and five-year-old children a variety of site and programming options, including two and three day classes and an evening preschool. Learn more at [sowashco.org/preschool](http://sowashco.org/preschool).

## Pre-kindergarten (Pre-K)

The pre-kindergarten program is for 4-year-olds one year prior to starting kindergarten. **Children must be age four on or before Sept. 1, 2022.** The program is located at most elementary school sites and offers programming five days a week with morning and afternoon half-day options..

**Parents are responsible for their child's transportation to and from school.** There is an \$85 application fee due at the time of enrollment. Families can register at [sowashco.org/enroll](http://sowashco.org/enroll).

### Pre-K is offered at the following schools:

- Armstrong Elementary
- Bailey Elementary
- Cottage Grove Elementary
- Crestview Elementary
- Grey Cloud Elementary
- Hillside Elementary
- Newport Elementary (available only to families who live within Newport Elementary School boundary)
- Pine Hill Elementary
- Pullman Elementary
- Royal Oaks Elementary
- Valley Crossing Elementary
- Woodbury Elementary

**\*Program sites and availability are subject to change.**

### Pre-K is offered to the following schools and held at Liberty Ridge Site II (11283 Eagle View Blvd. Suite 102 Woodbury, MN 55129):

- Liberty Ridge Elementary
- Middleton Elementary
- Red Rock Elementary

**\*Program sites and availability are subject to change.**



## Registration Fees and Financial Assistance

**There is a one-time, non-refundable registration fee of \$85 due at the time of enrollment for any early learning class.**

Financial assistance is available for families that meet certain state eligibility requirements. Families may be required to provide proof of income. Those that qualify for assistance will also be required to complete a State Pathways Scholarship application. Limited district scholarships are available.



# Before and After School Programs

## Kids Club

Kids Club is a fee-based child care program that supports learning and development before and/or after school, on non-school days and during the summer. The program is open to elementary students in grades K-5 at their school.

### School Year

**6:30 a.m. – 6 p.m.**

- Before and/or after school schedules.
- Locations are available at all elementary schools.
- Full-time (5-days a week) or part-time (1-4 days a week) schedules before and/or after school.
- Drop-in attendance option available.
- Care on non-school days is available to Kids Club participants at limited locations. Registration is required for non-school days.

### Summer

**6:30 a.m. – 6 p.m.**

- Full-day and half-day schedules available.
- Students must have completed their first year of kindergarten to attend.
- Students can attend until the summer following the completion of grade 5.

### Online Registration

- Online registration for the 2022-23 school year Kids Club begins at **9 a.m. on Monday, April 25.**
- Online registration for summer Kids Club begins at **9 a.m. on Wednesday, Feb. 23.**

### Contact Us



[sowashco.org/kidsclub](https://sowashco.org/kidsclub)



651-425-6639



[KidsClub@sowashco.org](mailto:KidsClub@sowashco.org)



Like us on Facebook @SoWashCoCE





# Before and After School Programs

## Elementary Sports and Activities

Sports and activities are managed through SoWashCo Community Education. Intramural sports and activities are for students in grades 2-5 and typically meet twice a week for one hour after school. To find activities for your child to participate in, please visit [commed.sowashco.org](http://commed.sowashco.org).



## Middle School Sports and Activities

Sports and activities are managed through SoWashCo Community Education. Students in grades 6-8 can participate in a variety of seasonal sports and activities. To find activities for your child to participate in, please visit [commed.sowashco.org](http://commed.sowashco.org).

## Adapted Athletics

SoWashCo Schools believes every student should have the opportunity to be involved in athletics. The Thunderbolts adapted athletics program is a co-ed team providing opportunities for students in grades 7-12 with various abilities to participate in a team sport and compete against other teams from around the state. To learn more or to sign up, please contact your school's athletic director.

**Soccer (Fall) | Floor Hockey (Winter) | Baseball/Softball (Spring)**

## High School Sports and Activities

SoWashCo Schools provides opportunities for students in grades 9-12 to pursue special interests that contribute to their physical, mental and emotional health. For more information about the sports and activities available, visit your high school's website.

High school students must have a current sports physical on record in order to register for any activity. Sports physicals are valid for three years.

### High School Athletic and Activities Directors

#### East Ridge High School

Sara Palodichuk  
Athletic Director

651-425-2348

[spalodic@sowashco.org](mailto:spalodic@sowashco.org)

#### Park High School

Philip Kuemmel  
Athletic Director

651-425-3758

[pkuemmel@sowashco.org](mailto:pkuemmel@sowashco.org)

#### Woodbury High School

Jodi Loeblein-Lecker  
Athletic Director

651-425-4421

[jloeblei@sowashco.org](mailto:jloeblei@sowashco.org)



# Special Education Services

SoWashCo Schools provides a comprehensive program for students with unique learning needs. We offer a continuum of services to address student needs in the areas of academics, social and emotional well-being, behavior, nursing, communication and assistive technology.

## Terms to Know

<b>ABC</b>	Academic Behavior Communication	<b>EBD</b>	Emotional Behavior Disorder
<b>ASD</b>	Autism Spectrum Disorder	<b>ECSE</b>	Early Childhood Special Education
<b>DCD</b>	Developmental Cognitive Disability	<b>Resource</b>	Specialized Supplementary Instruction

## Program Availability at Elementary Schools

School	ABC	ASD	DCD	EBD	ECSE	Resource
Armstrong Elementary School		•	•		•	•
Bailey Elementary School	•				•	•
Cottage Grove Elementary School		•	•		•	•
Crestview Elementary School	•			•	•	•
Grey Cloud Elementary School		•			•	•
Hillside Elementary School	•				•	•
Liberty Ridge Elementary School		•			•	•
Middleton Elementary School			•		•	•
Newport Elementary School				•	•	•
Pine Hill Elementary School	•				•	•
Pullman Elementary School	•				•	•
Red Rock Elementary School		•			•	•
Royal Oaks Elementary School		•			•	•
Valley Crossing Elementary School	•			•	•	•
Woodbury Elementary School	•		•		•	•

**\*Program sites and availability is subject to change**

## Other Services Available for Young Learners

### Early Childhood Special Education

Early Childhood Special Education (ECSE) provides programs and services for young children with disabilities from birth to age five. Services are provided for children from birth to two years old in a home setting. Children aged three to five are provided services in a preschool designed to meet their educational needs. A referral to early intervention services can be made through Amy Whinnery at 651-425-6134. To learn more about ECSE, visit [sowashco.org/ecse](http://sowashco.org/ecse).

# Special Education Services

## Program Availability at Middle Schools

School	ABC	ASD	DCD	EBD	Resource
Cottage Grove Middle School	•	•	•	•	•
Lake Middle School	•	•	•		•
Oltman Middle School	•		•	•	•
Woodbury Middle School	•		•		•

\*Program sites and availability is subject to change

## Program Availability at High Schools

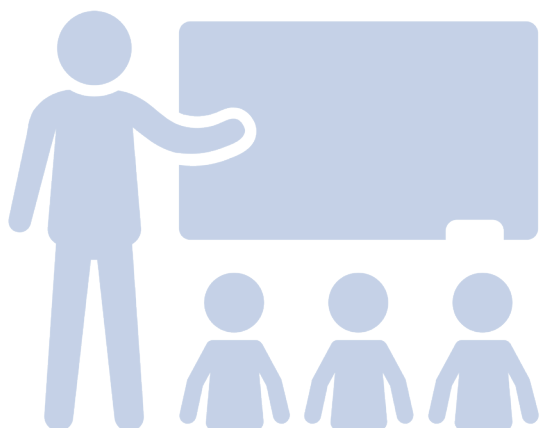
School	ABC	ASD	DCD	EBD	Resource
East Ridge High School	•	•	•	•	•
Park High School	•		•	•	•
Woodbury High School	•		•	•	•

\*Program sites and availability is subject to change

## Other Services Available for Young Adult Learners

### Next Step

The Next Step transition program offered by SoWashCo Schools provides transition services to students aged 18-21 who have a current Individualized Education Plan (IEP) and have not yet earned their high school diploma due to continued special education goals. The Next Step transition program comprises two student cohorts, Next Step and Pathways, both focusing on post-secondary education and training, employment and independent living skills. Learn more at [nextstep.sowashco.org](http://nextstep.sowashco.org).





# Talent Development and Advanced Academics

Talent Development and Advanced Academic (TDAA) services are offered at all SoWashCo Schools. **Students must be identified and invited to participate** in elementary and middle school cluster classrooms or the Gateway Program at Valley Crossing Elementary School.

## Identification Process

SoWashCo Schools screens and identifies students annually for advanced academic services. We conduct universal screening to find students who are demonstrating outstanding abilities and are capable of higher performance.

- All students in grade 2 are universally screened for advanced academic services.
- Students in grades 3-7 who were not previously identified but are demonstrating outstanding abilities may be screened for services.
- Student data, including the Measures of Academic Progress (MAP) assessment, is reviewed annually and teacher input is given to recommend students for further screening for advanced academic services.
- Students in grades 3-7 may also be referred by a parent or guardian.

## About Cluster Classrooms in Grades 3-8



- All SoWashCo elementary schools have cluster classrooms in grades 3-5.
- All SoWashCo middle schools have cluster classrooms for core subjects in grades 6-8.
- Cluster groupings place a small cluster of students together in the same classroom with a teacher who has received additional training in teaching with increased depth and complexity.
- Cluster classrooms have the same number of students as other classes and includes students with a broad range of abilities.
- Cluster classrooms allow students to learn with peers of all abilities while also being able to group together for more complex learning.



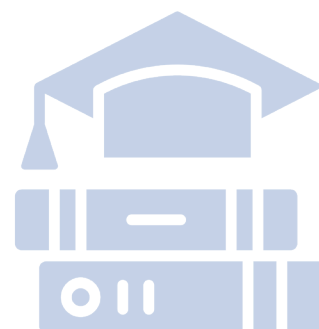
## About the Gateway Program

- The Gateway Program is located at Valley Crossing Elementary School for students in grades 3-5.
- Services are provided to students in an all-gifted-peer environment using curriculum with increased depth, complexity and pacing.
- Students are immersed in an intellectually challenging community that encourages academic risk taking.
- Families will be contacted for placement within the program.

## High School Advanced Academics

Each high school offers choice-based courses that allows for students to access advanced coursework such as:

- Advanced Placement (AP)
- International Baccalaureate Program (IB) at Park High School
- Project Lead the Way at East Ridge and Woodbury High Schools
- College in Schools (CIS) and Concurrent Enrollment
- Post Secondary Enrollment Options (PSEO)



# Student Support Services

## English Language Learner Program

SoWashCo Schools provides English language learner services for students whose home language is not English.

- During the enrollment process, SoWashCo Schools will ask information about a student and family's language background.
- Families that identify a home language other than English will have their child screened to determine if they qualify for English language services.
- English language coordinators will reach out to families to schedule screenings for students before the upcoming school year.

## Counseling Services

SoWashCo School counselors work with students, families, teachers and administrators to support students with their academic concerns, goals, career and college planning and social-emotional development. Counselors and school psychologists work with students individually or, at times, in groups and in the classroom.

## Elementary School

Most SoWashCo elementary schools have a psychologist on staff to assist students in need of services. Additionally, cultural liaisons can be available for elementary students and families upon request.

## Middle and High Schools

Students and families can contact school counselors for assistance with:

- Academic planning and support
- Family support
- Mental health support
- Friends and peers
- Home and family
- Housing and resources
- Substance abuse
- Schedule and registration questions

## Technology

Every student receives their own assigned device (Chromebook or iPad) to use during the school year. Devices and other digital tools provide learners with opportunities to create, think critically, solve problems, communicate and collaborate.



## Cultural Liaisons

Students and families can connect with Cultural Liaisons for:

- Leadership opportunities
- Check-ins and connections
- Multicultural events and opportunities
- Learn more about their culture



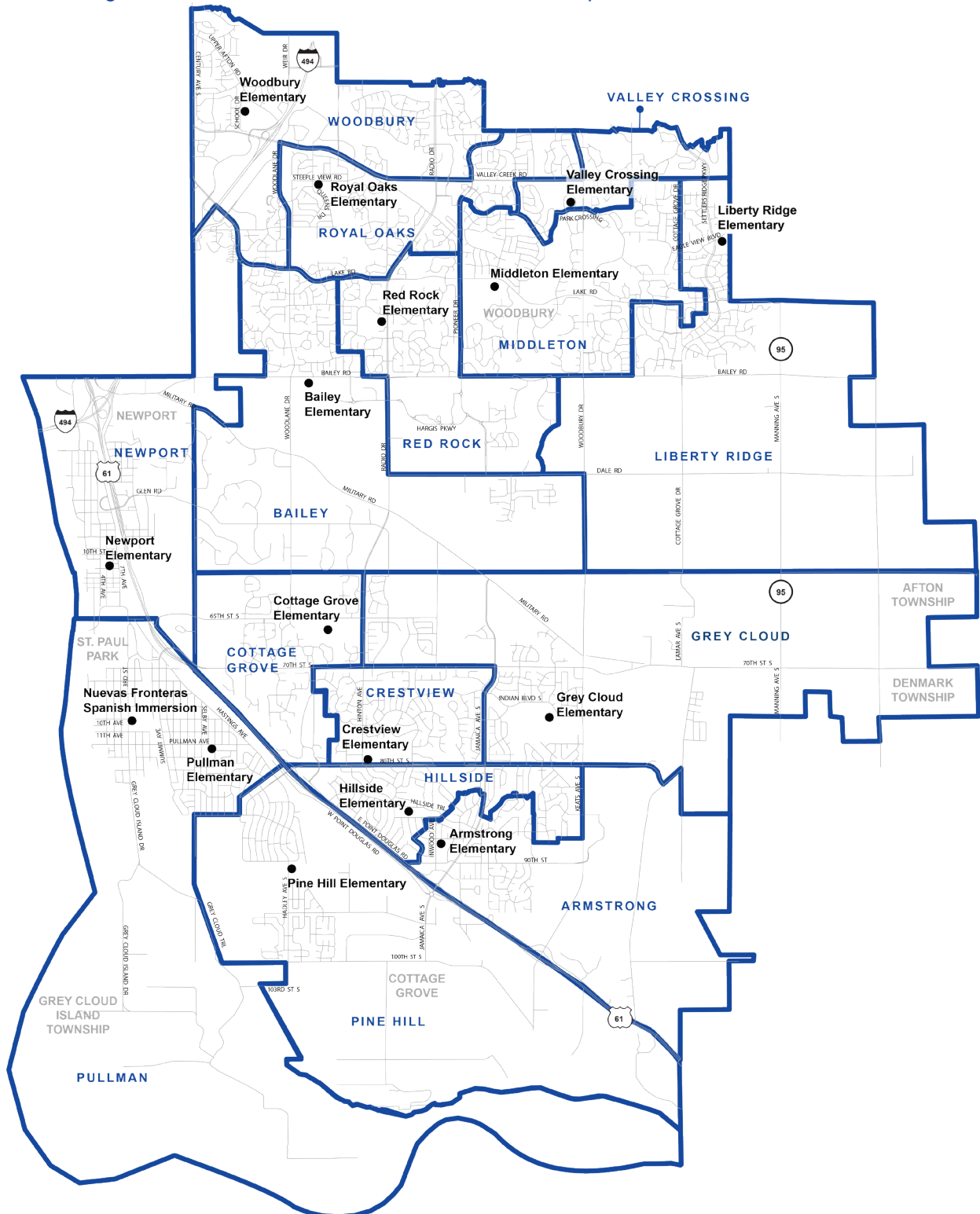
Learn more at [sowashco.org/familyengagement](https://sowashco.org/familyengagement)



# Elementary School Boundaries

SoWashCo Schools has 16 elementary schools serving students in grades Pre-K-5 and an online school, SoWashCo Online, for students in grades K-5.

To determine your child's boundary school, use our boundary school calculator at [sowashco.org/enroll](http://sowashco.org/enroll) or contact the Student Information Department at 651-425-6328.





# Elementary Schools

## Armstrong Elementary School (PreK-5)

8855 Inwood Ave. S. Cottage Grove, MN 55016 | [aes.sowashco.org](http://aes.sowashco.org) | 651-425-4100

- In grades 3-5, students are taught Advancement Via Individual Determination (AVID) strategies to help them stay organized and gain study skills to become successful with school.
- Students can stay involved with their classmates through student council, yearbook club and as student ambassadors.
- Students are offered opportunities in choir and competitive sports activities throughout the school year.
- Teachers personalize learning for each student through relationships and technology (iPads for grades K-2, Chromebooks for grades 3-5).
- Armstrong recently celebrated its 50th anniversary with staff, students and alumni.
- There is an active Parent Teacher Organization (PTO) and several community-building events throughout the year.

Pre-K	Start Time / End Time	Kids Club
•	8:40 a.m. - 3:10 p.m.	•

## Bailey Elementary School (PreK-5)

4125 Woodlane Dr. Woodbury, MN 55129 | [bes.sowashco.org](http://bes.sowashco.org) | 651-425-4800

- Bailey Elementary students are taught to always submit their best work through setting and achieving academic goals.
- Updated facilities include classroom microphones, flexible seating options in the classroom and an outdoor learning space.
- Students can connect with their classmates through choir, Passport Club, student council and as student ambassadors.
- Students are encouraged to learn outside of the classroom through yearly STEM (Science, Technology, Engineering and Math) fair to showcase independent student projects, a World Cultures Week and a Battle of the Books event.
- Community-building events are held throughout the year including spirit days, kindness week and a fun run in the spring.
- Families can get involved with an active Parent Teacher Association (PTA).

Pre-K	Start Time / End Time	Kids Club
•	9:20 a.m. - 3:50 p.m.	•

## Cottage Grove Elementary School (PreK-5)

7447 65th Street S. Cottage Grove, MN 55016 | [cges.sowashco.org](http://cges.sowashco.org) | 651-425-5800

- A new, fully inclusive and accessible playground provides every student with the opportunity to play together.
- Each month, a student in every classroom is recognized for being a great school community member with their photos displayed in the commons area.
- Students can engage with their peers outside of the classroom in student council, student ambassadors and Boys and Books Club.
- Staff, students and parents are committed to collaborating to ensure each person feels valued, respected and has a sense of belonging.
- Cottage Grove Elementary offers special education center-based programs for children with autism spectrum disorder (ASD) and developmental cognitive disabilities (DSD).
- There is an active Parent Teacher Organization (PTO) that helps host multiple community-building events throughout the school year.

Pre-K	Start Time / End Time	Kids Club
•	8:40 a.m. - 3:10 p.m.	•

# Elementary Schools

## Crestview Elementary School (PreK-5)

7830 80th Street S. Cottage Grove, MN 55016 | [ces.sowashco.org](http://ces.sowashco.org) | 651-425-3800

- Classrooms are equipped with technology to help meet the unique needs of each student through individual devices, smartboards, classroom microphones and devices for students who are hard of hearing.
- Students are offered opportunities in choir and competitive activities such as word master, geography bee and math league.
- Students learn through a variety of unique programs such as mindful movement, be the boss of your stress and the forest restoration project.
- Support is offered outside of school hours through extended day learning for a portion of the year, tutoring and summer home visits when available.
- Each month students host Cardinal Jam, an all-school meeting to recognize students who demonstrate growth and leadership.
- The Crestview Elementary Parent Association (PTA) assists with a variety of events throughout the year including family nights, school dances, discovery day and more.

Pre-K	Start Time / End Time	Kids Club
•	7:55 a.m. - 2:25 p.m.	•

## Grey Cloud Elementary School (PreK-5)

9525 Indian Blvd. S. Cottage Grove, MN 55016 | [gces.sowashco.org](http://gces.sowashco.org) | 651-425-4200

- Grey Cloud Elementary earned the honor of being a Blue Ribbon school in 2020 from the U.S. Department of Education for educational excellence and progress in closing the achievement gap.
- Students can connect with their classmates through choir, cribbage and chess club, theatre group, student council, student ambassadors and by being a crossing guard.
- Students participate in a monthly schoolwide theme to encourage learning and emotional growth including unity month, kindness month, grit and goals month, reading month and more.
- Grey Cloud Elementary is in the process of adding an outdoor classroom and participating in a prairie restoration project.
- Grey Cloud Elementary shares a campus with Cottage Grove Middle School and connects to Kingston Park by a variety of trails.
- There is a center-based program for students with high communication and sensory needs.
- Families can join the active Parent Teacher Association (PTA) to help organize community events for Grey Cloud Elementary.

Pre-K	Start Time / End Time	Kids Club
•	8:40 a.m. - 3:10 p.m.	•

## Hillside Elementary School (PreK-5)

8177 Hillside Trail S. Cottage Grove, MN 55016 | [hes.sowashco.org](http://hes.sowashco.org) | 651-425-4000

- Students enjoy Hillside's new playground features, a large outdoor campus and individualized technology in the classroom to meet unique educational needs.
- Hillside Elementary uses the HAWKS system which centers around being helpful, having a positive attitude, working hard, kindness and being safe.
- Hillside focuses on the social-emotional learning of each student through skill development and the implementation of mindful movement.
- Students have the opportunity to bond with other students outside of the classroom in choir, youth advisory council, student council and student ambassadors.
- There is a welcoming Parent Teacher Organization (PTO) that helps host multiple community-building events throughout the school year.

Pre-K	Start Time / End Time	Kids Club
•	8:40 a.m. - 3:10 p.m.	•

# Elementary Schools



## Liberty Ridge Elementary School (PreK-5)

11395 Eagle View Blvd. Woodbury, MN 55129 | lres.sowashco.org | 651-425-5900

- Updated indoor classroom facilities and outdoor playground equipment allow students to grow academically, socially and physically.
- Teachers provide personalized learning opportunities in the classroom through technology and face-to-face individual support.
- Students can connect with classmates in a variety of activities outside of the classroom including choir, student council, word masters, Battle of the Books and Percussion Club.
- Liberty Ridge hosts a variety of events for students and families, including reading month, a fun run and more.
- Classrooms are located in grade-level pods throughout the school, where classes can collaborate, connect and learn together.
- Families can join a supportive Parent Teacher Association (PTA) which regularly coordinates, volunteers and plans events to encourage a strong school community.

Pre-K	Start Time / End Time	Kids Club
• Located at Liberty Ridge Site II	9:20 a.m. – 3:50 p.m.	•

## Middleton Elementary School (PreK-5)

9105 Lake Rd. Woodbury, MN 55125 | mes.sowashco.org | 651-425-4900

- Updated facilities at Middleton Elementary include classroom microphones, flexible seating options in the classroom, the Mustang Meadow calming collaboration space and an outdoor classroom.
- Students are encouraged to learn outside of the classroom through school events like Middleton World Cultures Week, art shows and science fairs.
- Middleton Elementary encourages a positive learning environment by recognizing students each school day who have exemplified kind actions or have shown growth.
- Students can engage in extracurricular activities such as choir, student council, student ambassadors and youth advisory council.
- There is a welcoming Parent Teacher Organization (PTO) that plans fun, annual events including the Middleton Fall Festival.

Pre-K	Start Time / End Time	Kids Club
• *Located at Liberty Ridge Site II	8:40 a.m. – 3:10 p.m.	•

## Newport Elementary School (PreK-5)

651 6th Ave. Newport, MN 55055 | nes.sowashco.org | 651-425-4300

- Newport is a Title I school that provides additional educational opportunities and resources to support student growth in grades K-2.
- Students can connect with classmates through choir, student council, student ambassadors and youth advisory council.
- Monthly schoolwide meetings celebrate school successes and encourage learning and emotional development.
- Newport has been recognized as a “Beat the Odds” school by the Star Tribune in 2020, 2019 and 2018 for high academic performance in reading and math.
- Families can join an active Parent Teacher Organization (PTO) that supports students, staff and the school community.

Pre-K	Start Time / End Time	Kids Club
•	7:55 a.m. – 2:25 p.m.	•

\* Program site is subject to change.



# Elementary Schools

## Nuevas Fronteras Spanish Immersion (K-5)

1020 Third Street St. Paul Park, MN 55071 | [nfsi.sowashco.org](http://nfsi.sowashco.org) | 651-425-3100

- Nuevas Fronteras is a districtwide magnet school for K-5 Spanish immersion where students are fully immersed in the Spanish language.
- Updated facilities include flexible learning spaces to encourage collaboration and a new comprehensive media center to support learning in Spanish and English.
- Monthly schoolwide meetings are held to recognize students and build a positive school environment.
- Students can connect outside of the classroom through student council, student advisory council, district ambassadors, run club and choir.
- There is a supportive Parent Teacher Student Organization (PTSO) that plans community-building events throughout the year.

Pre-K	District Magnet Program	Start Time / End Time	Kids Club
Not Available	*Requires lottery admission	9:20 a.m. – 3:50 p.m.	•

Join Nuevas Fronteras Spanish Immersion staff for a virtual information night about the magnet program on **Wednesday, Jan. 12, 2022 at 6 p.m.** A Zoom link will be available at [nfsi.sowashco.org](http://nfsi.sowashco.org).

## Pine Hill Elementary School (PreK-5)

9015 Hadley Ave. S. Cottage Grove, MN 55016 | [phes.sowashco.org](http://phes.sowashco.org) | 651-425-3900

- There are a variety of services offered to support student growth including reading and math specialists, academic success coaches and talent development programs.
- Students are taught the Pine Hill Panther way which centers around being respectful, responsible, positive and safe.
- Students can connect with classmates in activities outside of the classroom including choir, student council, student advisory council and youth advisory council.
- Monthly schoolwide meetings are held to celebrate students and focus on a development skill of the month.
- Teachers personalize learning for each student through relationships and technology (iPads for grades K-2, Chromebooks for grades 3-5).
- Pine Hill Elementary has an active Parent Teacher Association (PTA) that supports field trips, family nights and more throughout the year.

Pre-K	Start Time / End Time	Kids Club
•	8:40 a.m. – 3:10 p.m.	•

## Pullman Elementary School (PreK-5)

1260 Selby Ave. St. Paul Park, MN 55071 | [pes.sowashco.org](http://pes.sowashco.org) | 651-425-3600

- Students are encouraged to learn outside of the classroom through a yearly global arts festival that showcases each student's cultural heritage.
- Students are provided with individual devices to help meet their unique needs (iPads for grades K-2 and Chromebooks for grades 3-5).
- Teachers provide personalized learning opportunities in the classroom through technology and face-to-face individual support.
- Students can connect with classmates through choir, Lego Club, AVID Club, student council, student ambassadors and youth advisory council.
- There is a welcoming Parent Teacher Organization (PTO) that meets monthly and plans events for the school community.

Pre-K	Start Time / End Time	Kids Club
•	8:40 a.m. – 3:10 p.m.	•

# Elementary Schools

## Red Rock Elementary School (PreK-5)

3311 Commonwealth Ave. Woodbury, MN 55125 | rres.sowashco.org | 651-425-5600

- Red Rock focuses on the social-emotional learning of each student through skill development, the implementation of mindful movement and providing calming spaces.
- Red Rock hosts an annual World Culture Week where students teach each other about their culture and heritage.
- Teachers provide personalized learning opportunities in the classroom through technology and individual support.
- Students can connect with classmates in a variety of activities outside of the classroom including choir, student council, student advisory council, district advisory council, and Battle of the Books.
- Families can join an active Parent Teacher Organization (PTO) to help plan community-building events throughout the year.

Pre-K	Start Time / End Time	Kids Club
• *Located at Liberty Ridge Site II	7:55 a.m. - 2:25 p.m.	•

## Royal Oaks Elementary School (PreK-5)

7335 Steepleview Rd. Woodbury, MN 55125 | roes.sowashco.org | 651-425-4700

- Updated facilities at Royal Oaks Elementary include smartboards, a zen den and a motor room for students to focus on mindfulness and self regulation (the ability to manage their energy, emotions, thoughts and behaviors.)
- Students start each day by focusing on social and emotional learning and building a positive environment for growth.
- Students can connect outside of the classroom through student council, student advisory council, district ambassadors, safety patrol, Girls on the Run and choir.
- Students vote on a theme for schoolwide celebrations that are held each month.
- Royal Oaks has a welcoming Parent Teacher Association (PTA) that supports the school community.

Pre-K	Start Time / End Time	Kids Club
•	7:55 a.m. - 2:25 p.m.	•

## SoWashCo Online (K-5)

sowashco.org | 651-425-7300 | online@sowashco.org

- SoWashCo Online provides students the flexibility to learn on their schedule in a location that best meets their needs.
- Students can learn at their own pace, supported by SoWashCo Schools teachers experienced in creating engaging online learning environments.
- SoWashCo Online embraces students' development in problem-solving that will be critical for jobs no one has yet envisioned.
- SoWashCo Online will help students focus on developing positive self-esteem, cultivating curiosity, demonstrating responsibility and organization and time management.
- In grades K-5, teachers and adult learning partners play an active role in helping to facilitate learning online. Over time, students will be empowered to direct their own learning.

Pre-K	Start Time / End Time	Kids Club
Not Available	8:40 a.m. - 3:10 p.m.	Not Available

\* Program site is subject to change.



# Elementary Schools

## Valley Crossing Elementary School (PreK-5)

9900 Park Crossing, Woodbury, MN 55125 | [vces.sowashco.org](http://vces.sowashco.org) | 651-425-7500

- Valley Crossing is a district magnet school for multiage classrooms that allows students to develop relationships with the same team of teachers and classmates over a two-year period.
- Students can connect with classmates in activities outside of the classroom including, choir, Valley News Network, battle of the books, student council, student advisory council and youth advisory council.
- Classrooms are located in neighborhood pods throughout the school, where classes can collaborate, connect and learn together.
- Valley Crossing hosts the Gateway Program which serves students in an all-gifted peer environment using curriculum with increased depth, complexity and pacing as the primary lens for designing instruction.
- Families can join an active Parent Teacher Association (PTA) that coordinates community-building events throughout the year.

Pre-K	District Magnet Program	Start Time / End Time	Kids Club
•	*Multiage program requires lottery admission *Gateway program requires invitation	9:15 a.m. - 3:45 p.m.	•

Join Valley Crossing Elementary staff for a virtual information night about the multiage magnet program on **Wednesday, Jan. 12, 2022 at 6 p.m.** A Zoom link will be available at [vces.sowashco.org](http://vces.sowashco.org).

## Woodbury Elementary School (PreK-5)

1251 School Dr. Woodbury, MN 55125 | [wes.sowashco.org](http://wes.sowashco.org) | 651-425-4600

- Woodbury Elementary provides students with hands-on learning opportunities including learning how to code applications and robots.
- Updated facilities include a maker space for students to practice artistic creativity and problem solving during the school day.
- Students can socialize through school programs including math masters, Robotics Club, student council, student advisory council, district ambassadors and choir.
- Teachers provide personalized learning opportunities in the classroom through technology and face-to-face individual support.
- There is a welcoming Parent Teacher Organization (PTO) that provides support for the school community.

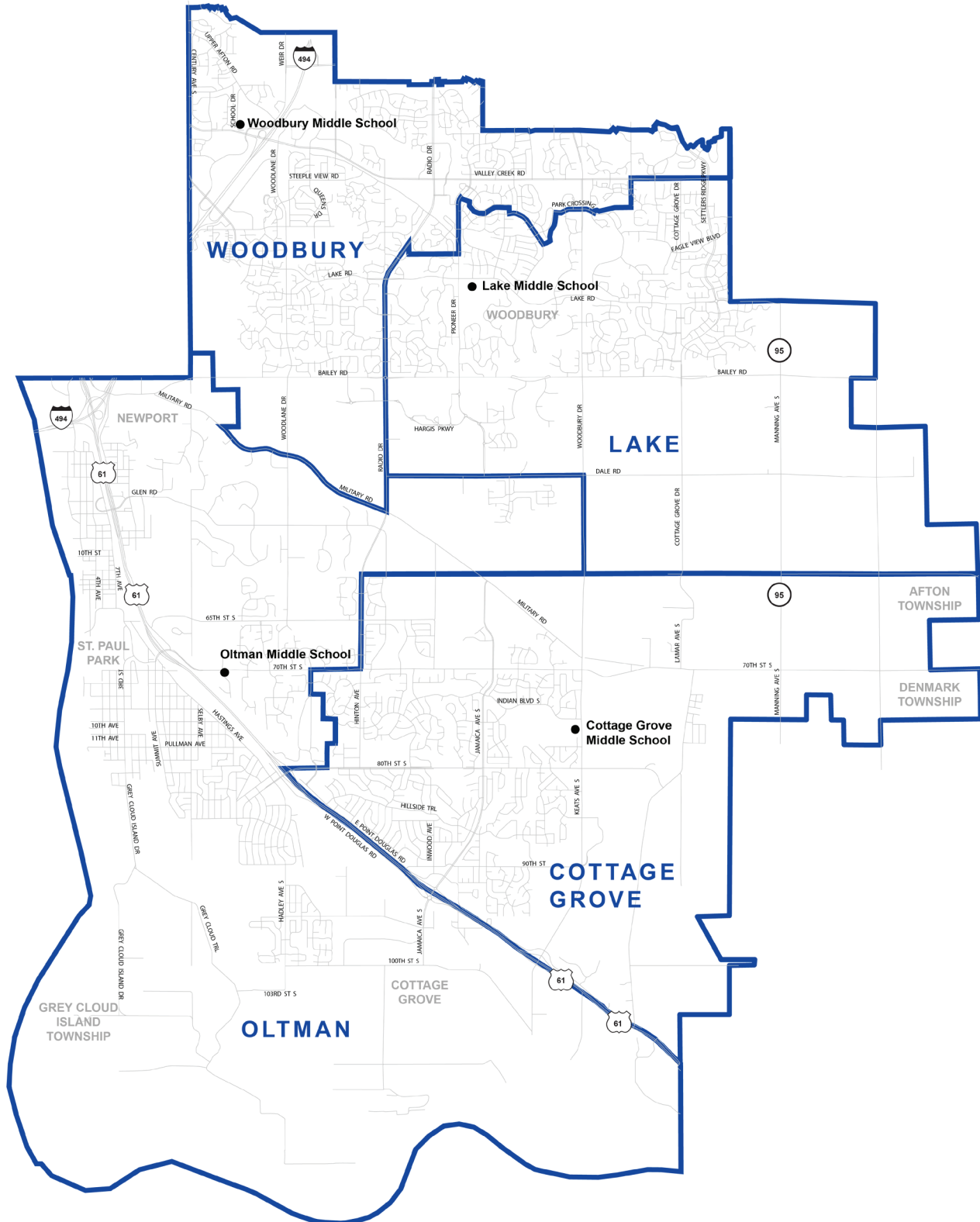
Pre-K	Start Time / End Time	Kids Club
•	8:40 a.m. - 3:10 p.m.	•



# Middle School Boundaries

SoWashCo Schools has four middle schools serving students in grades 6–8.

To determine your child's boundary school, use our boundary school calculator at [sowashco.org/enroll](https://sowashco.org/enroll) or contact the Student Information Department at 651-425-6328.



# Middle Schools

## Cottage Grove Middle School (6-8)

9775 Indian Blvd. S. Cottage Grove, MN 55016 | [cgms.sowashco.org](http://cgms.sowashco.org) | 651-425-6800

- Once a month, Cottage Grove Middle School (CGMS) recognizes students who have been nominated for best representing our four core values of respect, integrity, commitment and compassion.
- The CGMS counseling team creates weekly social-emotional lessons designed to help students develop skills and build confidence.
- Classrooms are equipped with wireless microphones to help teachers amplify learning for students.
- CGMS has 15 clubs and activities including; One-Act Play, fall and spring musical, speech team, math team, student council, yearbook club, Gay-Straight Alliance (GSA) Club, Upstanders (anti-building group) and Running Club.

Start Time / End Time	Indigenous/World Languages
7:50 a.m. - 2:26 p.m.	<ul style="list-style-type: none"> <li>• Spanish (Grade 8 Only)</li> </ul>

## Lake Middle School (6-8)

3133 Pioneer Dr. Woodbury, MN 55125 | [lms.sowashco.org](http://lms.sowashco.org) | 651-425-6400

- Each week, select students are recognized as Lake Leaders through positive behavior referrals.
- During advisory time (homebase) students participate in the "Top 20 Teens" curriculum which supports students' social-emotional development in their thinking, learning and communicating with others.
- Lake Middle School (LMS) has three full size gymnasiums, a swimming pool and each classroom is equipped with wireless microphones to help teachers amplify learning for students.
- The mission of LMS is to provide a student-centered environment inspiring leadership, academics, kindness and excellence.
- Students have an opportunity to participate in after-school theatre, musical ensembles, math league and math counts.

Start Time / End Time	Indigenous/World Languages
7:50 a.m. - 2:26 p.m.	<ul style="list-style-type: none"> <li>• Spanish (Grade 8 Only)</li> </ul>



# Middle Schools

## Oltman Middle School (6-8)

6625 Goodview Ave. S. Cottage Grove, MN 55016 | oms.sowashco.org | 651-425-3500

- Oltman Middle School (OMS) has monthly Raiders Rallies that bring the whole school together to learn, laugh, honor and celebrate the good things happening in our school.
- OMS offers collaborative learning spaces with comfortable seating, technology bars, mobile classroom furniture and enhanced security systems.
- Students can register for advanced math and Spanish courses that can count toward high school credit.
- After school, students can participate in theatre, Jazz Band, Chamber Orchestra, Art Club, Anime Club, Movie Critics Club, Newspaper Club, Chess Club and student council.
- OMS has an active Parent Teacher Organization (PTO) that helps support enrichment programs and activities, field trips and student recognition programs.

Start Time / End Time	Indigenous/World Languages
7:50 a.m. - 2:26 p.m.	<ul style="list-style-type: none"><li>• Spanish (Grade 8 Only)</li></ul>

## Woodbury Middle School (6-8)

1425 School Dr. Woodbury, MN 55125 | wms.sowashco.org | 651-425-4500

- Woodbury Middle School (WMS) students are recognized weekly for demonstrating the Wildcat Way - respect, responsibility, participation and perseverance.
- WMS offers the continuation of the Spanish Immersion Pathway from Nuevas Fronteras Spanish Immersion School.
- School counselors help coordinate peer homework helpers and the Check and Connect Program.
- WMS includes classroom microphones, flexible learning spaces, movable furniture and sliding glass doors to allow for collaborative learning.
- WMS offers 20 clubs and activities including; theatre, Wildcat News Crew, student council, music ensembles and dodgeball.

Start Time / End Time	Indigenous/World Languages
7:50 a.m. - 2:26 p.m.	<ul style="list-style-type: none"><li>• Spanish (Grade 8 Only)</li></ul>

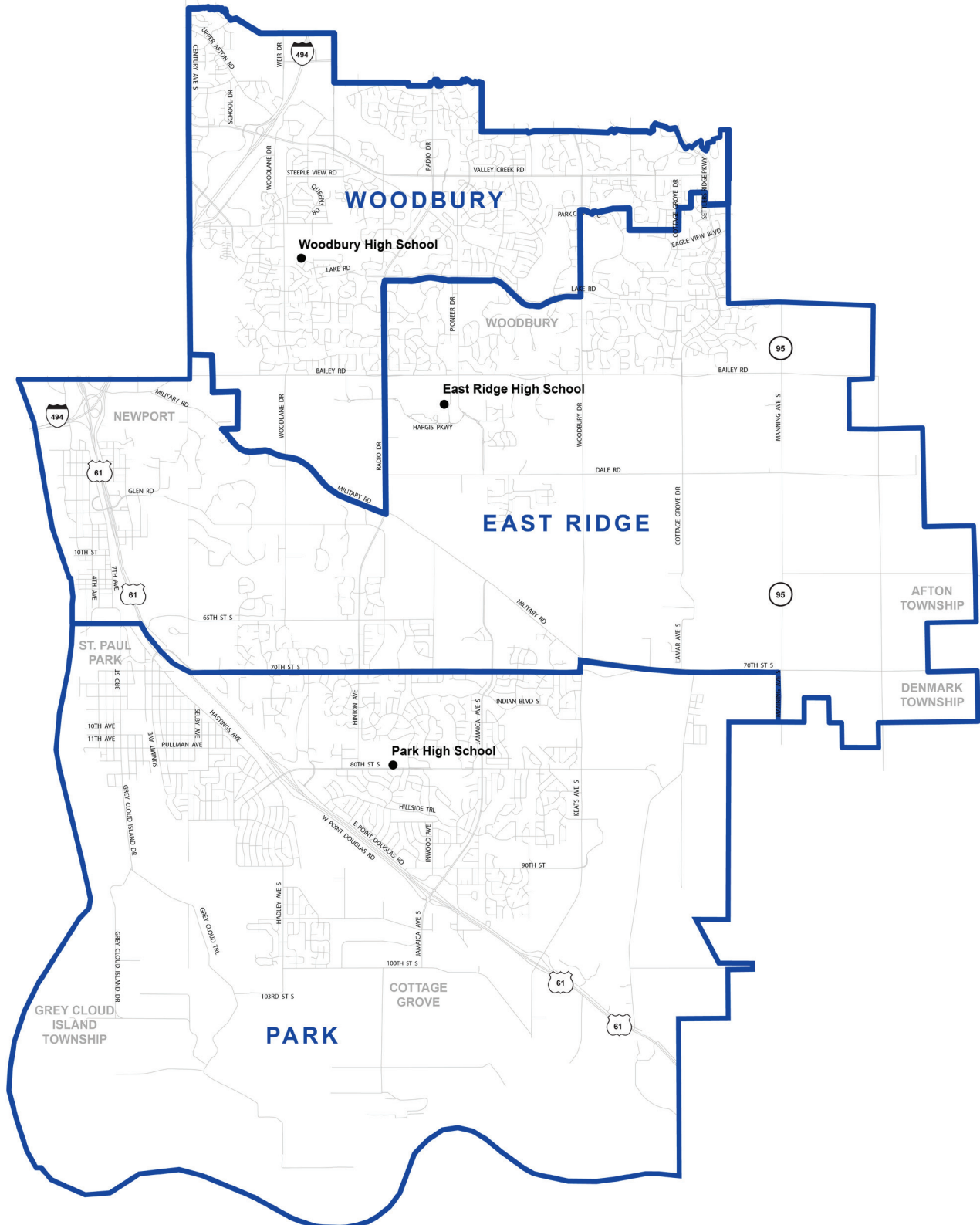




# High School Boundaries

SoWashCo Schools has three comprehensive high schools, an online high school and an alternative high school serving students in grades 9-12. Each school offers a variety of unique opportunities, classes and programs for students.

To determine your child's boundary school, use our boundary school calculator at [sowashco.org/enroll](http://sowashco.org/enroll) or contact the Student Information Department at 651-425-6328.





# High Schools



## East Ridge High School (9-12)

4200 Pioneer Dr. Woodbury, MN 55129 | [erhs.sowashco.org](http://erhs.sowashco.org) | 651-425-2300

- East Ridge High School (ERHS) offers an Engineering and Computer Science Pathway for students interested in pursuing a STEM (Science, Technology, Engineering, Math) career.
- Students can participate in College in Schools (CIS) through the University of Minnesota, 916 Courses through Century College, Advanced Placement (AP) courses, Post Secondary Enrollment Options (PSEO) and Project Lead the Way Engineering and Biomedical Sciences Sequences.
- Students who receive special education services can participate in East Ridge High Schools School Cafe vocational program.
- ERHS has several flexible learning classrooms to encourage collaborative and individual learning.
- The activity center has an indoor track, six wood floor courts, and a strength and conditioning center.
- Students can join more than 60 clubs and activities including robotics, speech, debate, theatre, varsity athletics, National Honor Society, Asian American Club, Diversity Club and more.

Start Time / End Time	Indigenous / World Languages
8:30 a.m. - 3:06 p.m.	<ul style="list-style-type: none"> <li>• Spanish</li> <li>• French</li> <li>• Mandarin Chinese</li> <li>• American Sign Language (ASL)</li> </ul>

## Park High School (9-12)

8040 80th Street S. Cottage Grove, MN 55016 | [phs.sowashco.org](http://phs.sowashco.org) | 651-425-3700

- Park High School (PHS) is an International Baccalaureate (IB) World School offering an academically challenging and balanced program that prepares high school students for success in college and life.
- In addition to IB courses, PHS also offers Advanced Placement (AP) and Concurrent Enrollment courses where students can earn college credit.
- PHS offers trade and industry programs where students have access to wood shop, small engines and metal labs.
- Students get creative in 3D printing, laser cutting and other high tech options.
- PHS offers more than 50 clubs and activities including; affinity groups, Link Crew, National Honor Society, speech team, theatre, yearbook and varsity athletics.
- PHS has an expansive athletic facility that includes a climate-controlled activity center with four courts, an indoor second story track, wrestling gym, gymnastics center and large weight room.

Start Time / End Time	Indigenous / World Languages
8:30 a.m. - 3:06 p.m.	<ul style="list-style-type: none"> <li>• American Sign Language (ASL)</li> <li>• French and IB French</li> <li>• Spanish and IB Spanish</li> </ul>

## Woodbury High School (9-12)

2665 Woodlane Dr. Woodbury, MN 55125 | [whs.sowashco.org](http://whs.sowashco.org) | 651-425-4400

- Woodbury High School (WHS) offers the continuation of the Spanish Immersion pathway from Woodbury Middle School.
- WHS is the only school in the district that offers Junior Reserves Officer Training Corps (JROTC) courses.
- WHS is proud to offer College in Schools (CIS), Advanced Placement (AP) courses and Concurrent Enrollment courses for college credit.
- Students can register for an auto shop course and work on real vehicles.
- 3M tutors are available for students in math and science courses before school.
- WHS offers 52 clubs and 29 varsity sports and activities including; speech team, mock trial, musical ensembles, marching band, theatre, Black Student Union, Asian American Club, Hispanic/Latino Club, Muslim Student Association and more.

Start Time / End Time	Indigenous / World Languages
8:30 a.m. - 3:06 p.m.	<ul style="list-style-type: none"> <li>• German</li> <li>• French</li> <li>• Spanish</li> <li>• American Sign Language</li> <li>• Mandarin Chinese</li> </ul>

# Non-Traditional High Schools

## South Washington Alternative High School (9-12)

8400 E. Point Douglas Rd. S. Cottage Grove, MN 55016 | swahs.sowashco.org | 651-425-7000

- South Washington Alternative High School (SWAHS) offers flexible learning to meet the needs of students where a traditional high school may not be a good fit.
- The Work Experience Program provides elective credits for students working outside of the school day in addition to their regular class schedule.
- The Achievement Lab allows students to work in a hybrid setting where they attend school in-person twice a week to get individualized support and participate in e-learning the other three days of the week.
- SWAHS offers college courses through Century College where students can earn college credits while working toward high school graduation.
- SWAHS connects students to post secondary institution options, training programs and employment opportunities.
- Upon graduation, SWAHS has a fun tradition of having students leave their painted hand print and signature on the graduation wall to celebrate their accomplishment and inspire others.

Start Time / End Time	Indigenous / World Languages
8:45 a.m. - 2:45 p.m.	

## SoWashCo Online (9-12)

sowashco.org | 651-425-7300 | online@sowashco.org

- SoWashCo Online provides students the flexibility to learn on their schedule in a location that best meets their needs.
- Students can join SoWashCo Online as a full-time student or part-time as an addition to their in-person classes at their high school.
- Courses offered include honors courses and Advanced Placement (AP) for potential college credit.
- Throughout the course, students will have the opportunity for one-on-one and small group support.
- Students learn time management skills while still being provided structure to keep them motivated, engaged and on track to complete the class.

Start Time / End Time	Indigenous / World Languages
Flexible	<ul style="list-style-type: none"> <li>• Spanish</li> </ul>

# SoWashCo School Board

SoWashCo Schools is made up of a seven-member school board. Board members are elected at large on election day in November. School Board meetings are typically held twice a month, a workshop meeting in the first half of the month and a business meeting in the second half of the month.

## Watch or Stream School Board Meetings



Business meetings are broadcast on Cable TV Channel 15 and streamed on SoWashCo Schools Youtube page, [youtube.com/sowashcoschools](https://youtube.com/sowashcoschools).

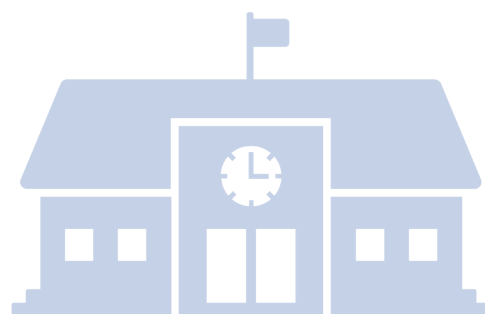
## Current School Board Members



- Sharon Van Leer
- Melinda Dols
- Patricia Driscoll
- Louise Hinz
- Simi Patnaik
- Katie Schwartz
- Eric Tessmer

# SoWashCo Schools District Directory

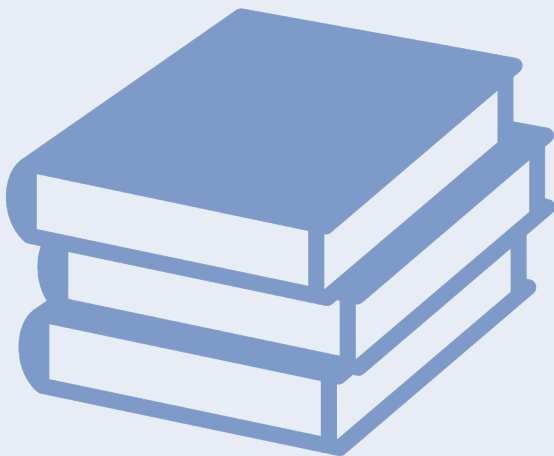
Name	Title	Email
Julie Neilsen	Superintendent	super@sowashco.org
Tyrone Brookins	Assistant Superintendent Oversees: <ul style="list-style-type: none"> <li>• Elementary Schools</li> <li>• Gateway Program</li> <li>• Multiage Magnet Program</li> <li>• Spanish Immersion Magnet Program</li> </ul>	tbrookin@sowashco.org
Kelly Jansen	Assistant Superintendent Oversees: <ul style="list-style-type: none"> <li>• Middle Schools</li> <li>• Achievement and Integration</li> <li>• English Learners</li> <li>• Talent Development and Advanced Academics</li> <li>• Professional Development</li> <li>• Program Evaluation, Research and Assessment</li> <li>• Student Information</li> <li>• Teaching and Learning</li> <li>• Technology</li> </ul>	kjansen@sowashco.org
Kristine Schaefer	Assistant Superintendent Oversees: <ul style="list-style-type: none"> <li>• High Schools</li> <li>• Athletics and Activities</li> </ul>	kschaef2@sowashco.org
Wayne Felton II	Director of the Department of Achievement and Integration	wfelton1@sowashco.org
Pepe Barton	Director of the Department of Communications and Community Relations	pbarton1@sowashco.org
Robert Lawrence	Director of the Department of Community Education	rlawrenc1@sowashco.org
Kyle Uecker	Director of the Department of Facilities and Construction	kuecker@sowashco.org



# SoWashCo Schools District Directory

## District Directory

Name	Title	Email
Dan Pyan	Director of the Department of Finance and Purchasing	dpyan0@sowashco.org
Kevin Witherspoon	Director of the Department of Human Resources and Benefits	kwithers@sowashco.org
Wendy Peterson	Director of the Department of Nutrition Services	wpeters01@sowashco.org
Mao Thao Jacobson	Director of the Department of Program Evaluation, Research and Assessment	mjacobs01@sowashco.org
Anna Braun	Director of the Department of Special Services	abraun1@sowashco.org
Trisha Turitto	Manager of the Department of Student Services	tturitto@sowashco.org
Charles Paulson	Director of the Department of Teaching and Learning - Elementary Education	cpaulson@sowashco.org
Tia Clasen	Director of the Department of Teaching and Learning - Secondary Education	tclasen@sowashco.org
Robert Berkowitz	Director of the Department of Technology Services	rberkowi@sowashco.org
Carrie Olson	Director of the Department of Transportation	colson9@sowashco.org



# Thank You



# OTERS

Stability and Technology for Our Kids

# Enrollment Questions and Answers

SoWashCo Schools Student Information Services works to assist students and families in finding their boundary schools, enrollment, homeschooling option, intra-district transfers, open enrollment, Infinite Campus support, student records, demographics, graduation and immunization records.

## What is an Intra-District Transfer (IDT)?

Intra-district transfers (IDT) are for students in grades K-12 living within the boundaries of SoWashCo Schools but wish to attend a school other than their boundary school.

## What is the Application Process for an IDT?

Families can apply for an intra-district transfer annually. The deadline to submit an application for elementary students is March 1, 2022. The deadline for students in grades 6-12 typically occurs in October through December. Applications submitted after the deadline are added to existing waiting lists.

## What is the Application Process for Open Enrollment?

Families can open enroll their child(ren) in some SoWashCo Schools by completing an open enrollment application that can be found at [sowashco.org/enroll](https://sowashco.org/enroll). Due to capacity constraints, some schools and grade levels are closed to open enrollment.

## Can My Child Finish the School Year if Our Family is Moving Outside of SoWashCo Schools Boundaries?

Students moving outside of SoWashCo Schools attendance boundaries during the school year may apply for open enrollment and be able to finish the school year at their current school; however, the student may be assigned to a different school the following year. SoWashCo Schools retains the right to assign non-resident students to other schools when these transitions occur, based on capacity and program.

## How Can My Child Obtain a Copy of Their Transcript?

Current SoWashCo Schools students can request an official or unofficial transcript through their school's guidance office. High School students can also find an unofficial transcript in Campus Student Portal under documents.

If you have questions about obtaining a transcript, please contact Student Information Services at 651-425-6218 or, visit [sowashco.org/transcripts](https://sowashco.org/transcripts).





# Health Questions and Answers

SoWashCo Schools Health Services helps eliminate/minimize health-related barriers to learning. Health services staff provide care for students with:

- Illness
- Injuries
- Chronic health conditions
- Medication administration
- Immunization review and compliance monitoring
- Implementations of health accommodations
- Creation and implementation of individualized health plans and emergency care plans
- Prevention and control of communicable diseases
- Vision and hearing screening
- Staff education



## How Do I Report My Child's Absence?

Families should report their child's absence each day they will be absent from school. Please call your child's school's attendance line and report your child's

- Name
- Grade
- Why they are absent
- If your child has symptoms or has been diagnosed with any communicable disease

## Can My Child's Prescription Medication be Distributed at School?

SoWashCo Schools allows health services personnel to dispense medication to students in need of medication during school hours. Families must complete the parental permission form, have a health care provider permission form and follow all other requirements which can be found at [sowashco.org/health](http://sowashco.org/health).



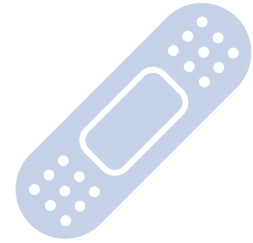
## Does SoWashCo Schools Do Vision Screening?

Healthy students are better learners. The ability to see adequately is directly linked to academic success. SoWashCo Schools Health Services annually screen students for vision acuity.

- Vision screening is done for all students in grades 1, 3 and 5 each year.
- Color vision screening is done each year for kindergarten boys only.
- Additional vision or hearing screening may be requested by teacher, parent, or student or when a student is referred for evaluation of learning difficulties.
- Parents will be notified of students who do not pass screening via a referral form that the health care provider completes. Once complete, it should be returned to the school health office.

# Required Immunizations

The Minnesota School Immunization Law requires that all students are current with certain immunizations before starting school unless there is a medical or conscientious exemption on file. Child immunization dates or exemption information must be given to the school health office before the first day of school. Learn more at [sowashco.org/health](http://sowashco.org/health).



Required Vaccinations			
Birth through Age 4 Early Childhood Programs	Age 5 to 6 Kindergarten and Kids Club	Age 7 to 11 Grades 1-6 and Kids Club	Age 12 and Older Grades 7-12
Hepatitis A (Hep A) ✓	-----	-----	-----
Hepatitis B (Hep B) ✓✓✓	Hepatitis B (Hep B) ✓✓✓	Hepatitis B (Hep B) ✓✓✓	Hepatitis B (Hep B) ✓✓✓
DTap/DT ✓✓✓✓	DTap/DT ✓✓✓✓	Tetanus and Diphtheria containing doses ✓✓✓	Tdap (and at least two tetanus and diphtheria containing doses) ✓
Polio ✓✓✓	Polio ✓✓✓✓	Polio ✓✓✓	Polio ✓✓✓
MMR ✓	MMR ✓✓	MMR ✓✓	MMR ✓✓
Hib ✓	-----	-----	Meningococcal and booster ✓
Pneumococcal ✓✓✓✓	-----	-----	-----
Varicella (Chicken Pox) ✓	Varicella (Chicken Pox) ✓✓	Varicella (Chicken Pox) ✓✓	Varicella (Chicken Pox) ✓✓
Highly Recommended, But Not Required			
Rotavirus (for infants)	Influenza (annually for anyone age six months and older)	COVID-19 Vaccine (available for anyone age five and older as of Dec. 2021)	Human Papillomavirus (begins at ages 11-12)

✓ Each check mark represents the number of doses a child should have by age group.

# School Breakfast and Lunch

Nutrition Services provides healthy and nutritious meals to students that meet or exceed USDA standards. Every menu consists of whole grains, lean protein, fruit and/or vegetable and milk daily.

Individual items (a la carte) and menu prices are available at [sowashco.org/nutrition](http://sowashco.org/nutrition).

## SchoolCafe

SoWashCo Schools uses SchoolCafe for student meal accounts. Parents can set low balance email reminders, schedule automatic payments when a balance of your choosing is reached, review student purchases online, view menus and apply for free and reduced education benefits.

## Educational Benefits

SoWashCo Schools families are encouraged to apply for educational benefits every year. SoWashCo Schools serves the same healthy meals to all students and provides the same services, no matter a family's income status.

Applications can be submitted online or dropped off at your child's school or the District Service Center, 7362 East Point Douglas Rd. S., Cottage Grove, MN 55016. For more information or to access the application, visit [sowashco.org/nutrition](http://sowashco.org/nutrition).



# More Than A Meal Application

Completing the Educational Benefits Form provides a variety of discounted or free benefits. It also helps provide essential funding to support all students in the district.

**Learn more and apply at [sowashco.org/edbenefits](https://sowashco.org/edbenefits)**



## **Meals**

Students can receive discounted or free meals at school.



## **Field Trips**

Schools can offer discounted or free field trips to students.



## **Community Education Programs**

Discounted or free classes and activities in the arts, athletics, academics and more.



## **Instrument Rentals**

Discounted or free instrument rentals for school band or orchestra.

## **Kids Club**

Discounted Kids Club child care before and after school and on non-school days.



## **Athletics**

Students can participate in discounted or free school athletics.



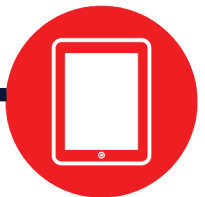
## **Student Fees**

Receive free or discounted graduation fees, student parking permits and more.



## **Device Protection Plans**

Receive free or discounted protection plans on school provided devices.



# Parent Resources



## Calendar

The district and family calendar can be found at [sowashco.org/calendar](http://sowashco.org/calendar). Calendars specific to your child's school can be found on the school's website.



## Campus Parent Portal

Campus Parent Portal allows parents or guardians to view online information about their child's class schedule, attendance, school bus route, assignments and more. Parents or guardians are required to update their information annually before the beginning of the school year. To request and account, email [ICSupport@sowashco.org](mailto:ICSupport@sowashco.org) or call 651-425-6317. A free app is available for download.



## Pay Fees (SmartSchoolK12)

Pay Fees is used for processing payments for school fees such as parking, transcripts, athletics and activities and more. Set up an account at [sowashco.org/fees](http://sowashco.org/fees).



## School Cafe

Student school meal accounts can be managed through SchoolCafe. Parents can setup low balance reminders, schedule automatic payments review purchases and more. SchoolCafe has a free app available for download on any mobile device.



## Schoolology

Schoolology is an online learning platform, or learning management system (LMS), used at all secondary SoWashCo Schools (Grades 6-12). Students and parents can use Schoolology to review assignments, due dates and grades to stay on top of academic progress. Learn more at [sowashco.org/parents/schoolology](http://sowashco.org/parents/schoolology).



## Seesaw

Seesaw is a student portfolio intended to give students in grades K-5 a place to create, submit and share learning with the class, teachers and parents. Teachers can post reminders to students and families within the app. For more information, visit [sowashco.org/parents/seesaw](http://sowashco.org/parents/seesaw).





# Join Our Team

## Now Hiring:



- Academic Support Services
- Athletics and Activities Coaches
- Community Education Positions
- Crossing Guards
- Elementary Teachers
- Health Services
- High School Teachers
- Kids Club Child Care
- Lunch / Recess Assistants
- Nutrition Services
- Special Services
- Bus Drivers and Bus Assistants

Learn more and apply at [sowashco.org/careers](https://sowashco.org/careers)

- Work with great students
- Collaborate with staff members
- Professional development opportunities
- Advancement opportunities
- Enjoy a comprehensive benefits package
- Some positions may qualify for hiring or retention bonuses

**If you have questions about a position or need help with an application, please call 651-425-6291**

## Stay Connected



SoWashCo Schools



South Washington County Schools



SoWashCo Schools



SoWashCo Schools





Independent School District #833  
7362 East Point Douglas Rd. S.  
Cottage Grove, MN 55016  
[www.sowashco.org](http://www.sowashco.org)

NON-PROFIT ORG.  
U.S. POSTAGE  
PAID  
PERMIT NO. 7911  
TWIN CITIES, MN

## Time to Enroll in SoWashCo Schools

- **Priority Enrollment**  
**Monday, Jan. 10 – Friday, Feb. 11**
- **Enroll Online at**  
**[sowashco.org/enroll](http://sowashco.org/enroll)**

The background of the bottom half of the page is dark blue. It features several large, overlapping circles in various colors: a large yellow circle, a large green circle, a large red circle, a large blue circle, and a smaller brown circle. The SoWashCo Schools logo is overlaid on the yellow and green circles.

**So  
Wash  
Co** SCHOOLS