

2019-20 K-12 Spanish Immersion Pathway

beginning at Nuevas Fronteras Spanish Immersion Elementary

What is Spanish Immersion?

Spanish Immersion is an educational model where students learn to speak Spanish as a second language during their elementary experience. Students in Spanish Immersion at District 833 attend Nuevas Fronteras Spanish Immersion Elementary School (NFSI) for grades K-5, Woodbury Middle School for grades 6-8 and Woodbury High School for grades 9-12. The immersion program follows the same curriculum as other District 833 schools and shares similar learning outcomes. The difference is that classroom instruction is delivered in Spanish. Classroom teachers are fluent in Spanish and are licensed teachers.



How do students enroll?

Enrollment for NFSI is determined through a lottery process. Families of incoming kindergarten students have a 10 day window to apply for the program starting on January 23, 2019. Families will then be notified of the lottery results on February 7, 2019. Families who are not selected by the lottery will be placed on a waiting list. Openings that occur after the kindergarten year require the equivalent Spanish proficiency for the child.

Frequently asked questions



Is transportation provided? Yes - transportation is provided for District 833 families who live outside of the one mile walking distance of NFSI or Woodbury Middle School. Transportation for K-12 Spanish Immersion students is currently provided through 8th grade.

What are the class sizes? NFSI follows similar class size guidelines as other District 833 schools. The class sizes in the K-12 immersion program are in alignment with the District's parameters approved by the School Board.

What is the school start/end time? The school day at NFSI begins at 9:20 a.m. and ends at 3:50 p.m.

Can I tour the school? Yes. A tour of NFSI will be held on January 25, 2019 from 9:30 - 11 a.m.

Who can apply?

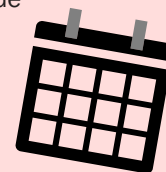


Students within the boundaries of District 833 are given first preference for enrollment in Spanish Immersion.

Families who have been accepted into the program will be allowed to continue through the K-12 pathway.

Important dates:

- **January 23, 2019 at 5:30 p.m.** - Spanish Immersion Information Night at NFSI
- **January 23, 2019** - First day to submit Kindergarten applications
- **January 25, 2019 from 9:30 - 11 a.m.** - School Tours at NFSI
- **February 5, 2019 by 4 p.m.** - Kindergarten applications due
- **February 7, 2019** - Families notified of lottery results
- **February 19, 2019 from 5:30 - 7 p.m.** - Kindergarten enrollment night at all elementary schools
- **September 5, 2019** - First day of school for Kindergarten



District 833: An east metro school district serving all or parts of the communities of Cottage Grove, Newport, St. Paul Park and Woodbury, and Afton, Denmark and Grey Cloud Townships, Minnesota.